

Woodward

C A B I N E T R Y



Classic Collection



Partial overlay | Shaker | 2-1/4" Rail | Slab drawer front
In Stock in select SKU's



Bark
Style Code 320
Price Group 1



Snow
Style Code 321
Price Group 1

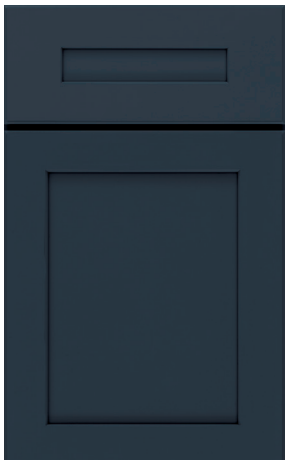
Woodward
CABINETS

Omni Collection



Full overlay | Shaker | 2-1/4" Rail | 5-Piece drawer front

Mineral and Snow In Stock in select SKU's



Admiral
Style Code 330
Price Group 2



Beachwood
Style Code 329
Price Group 2



Graphite
Style Code 328
Price Group 2



Mineral
Style Code 327
Price Group 2



Snow
Style Code 323
Price Group 2

Spectra Collection



Full overlay | Transitional | 3" Rail | 5-Piece drawer front



Mineral
Style Code 326
Price Group 3



Snow
Style Code 325
Price Group 3

Woodward
C A B I N E T R Y

Omni Admiral Product Offering

Base

B12R
B15R
B18R
B21R
B24
B27
B30
B33
B36
B9FHR
3DB15
3DB18
3DB21
3DB24
3DB30
3DB36
BBMWD30
BWB18
SB30
SB33
SB36
CNTYSB36
BC42S
BER36R
SLS36R

Wall

W1830
W2130R
W2430
W2730
W3030
W3630
W1836R
W2136R
W2736
W3036
W3636
W361824
DW302424R

Tall

U188424R
U189024R

Vanity

VSB243421
VSB303421
VSB363421

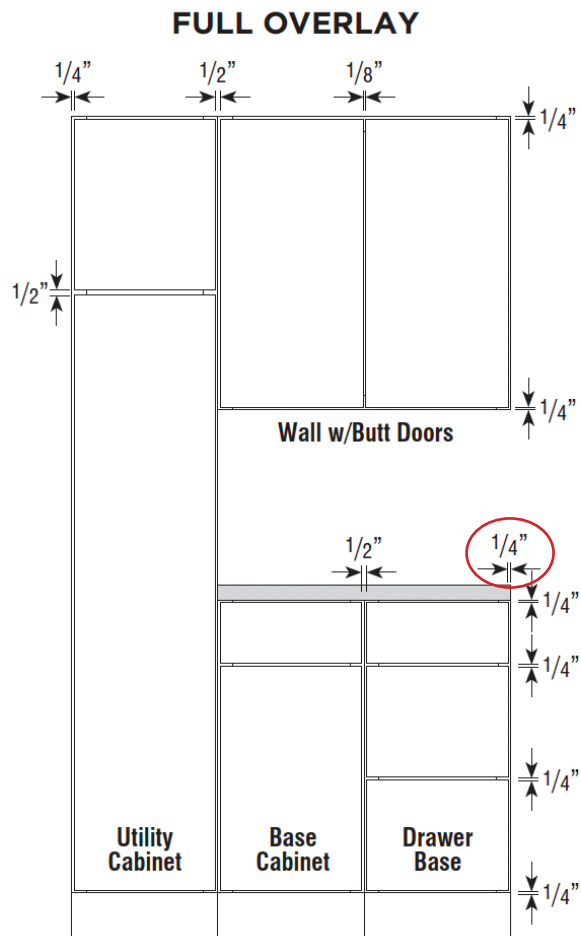
Accessories

QUARTCOLOR
SSC
TUK
MTUK

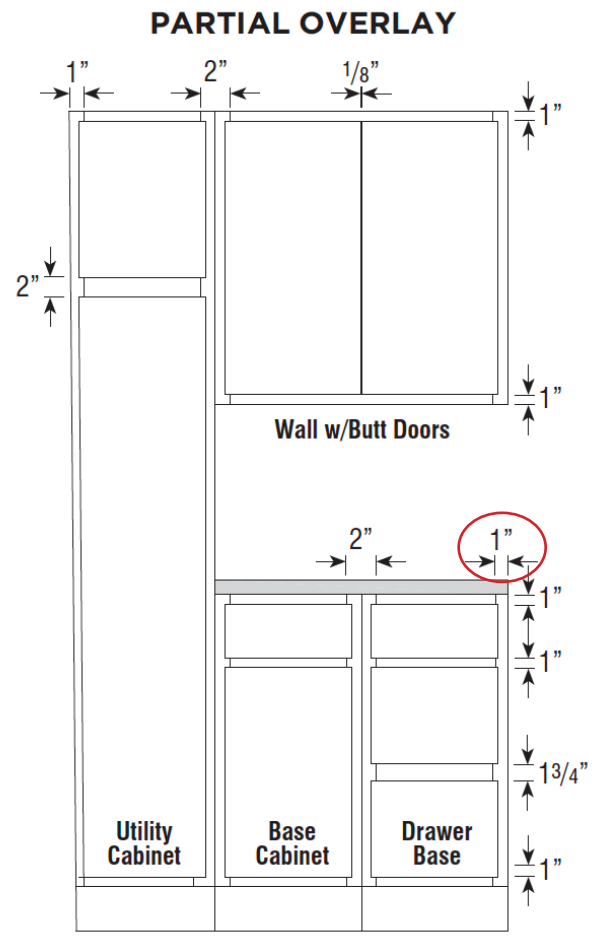
Fillers, Skins, Panels and Moulding

F330
F336
BP4896LAM14
BEPF3LAM
TEP2496F1.5
WED1230
WED1236
BEDSD
SWCRM8
SMCOVECROWN8
STRS8
SM8
SSM8
LB2
OCM8
QRM
TB8LAM14
VV96

Full and Partial Overlay Specifications



1/4" reveal between door and end of cabinet



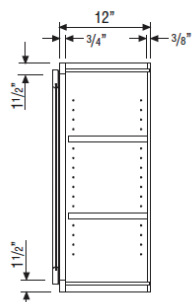
1" reveal between door and end of cabinet

Tips | Installation Guide

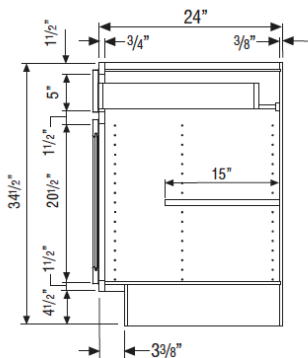
Clearances

- Add fillers between end cabinets and walls on full overlay styles.
- Allow space between door/window trim and end cabinets for countertop and top moulding overhang.
- Include refrigerator door hinges in overall refrigerator height when placing cabinets above it.

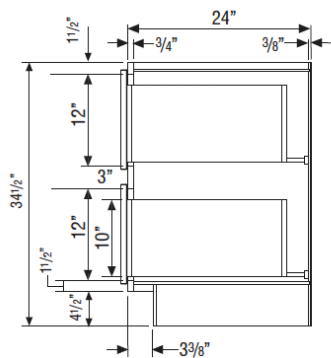
Cabinet Dimensions



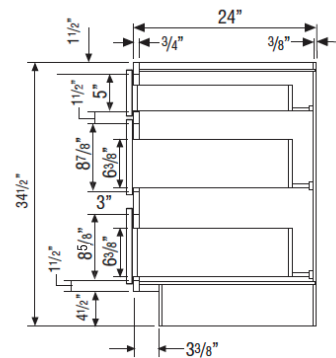
WALL CABINET



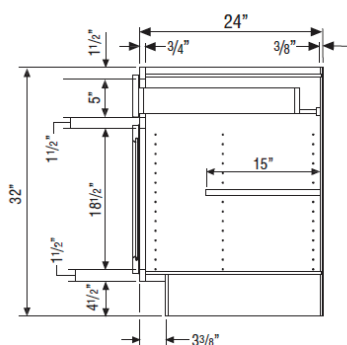
BASE CABINET



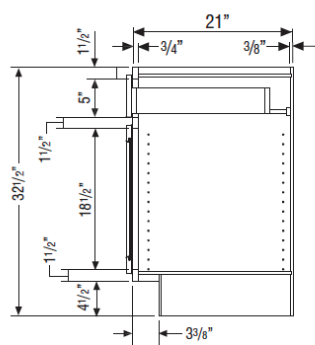
**TWO-DRAWER
BASE CABINET**



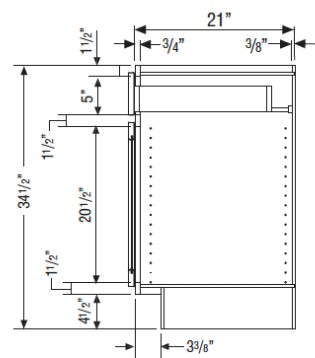
**THREE-DRAWER
BASE CABINET**



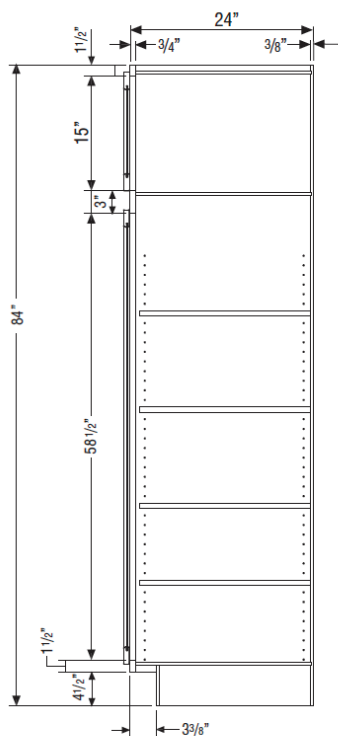
**32 1/2" HIGH
BASE CABINET**



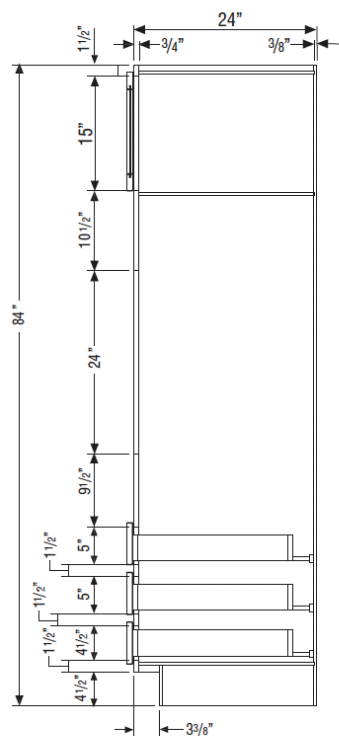
**32 1/2" HIGH
VANITY CABINET**



**34 1/2" HIGH
VANITY CABINET**



UTILITY CABINET

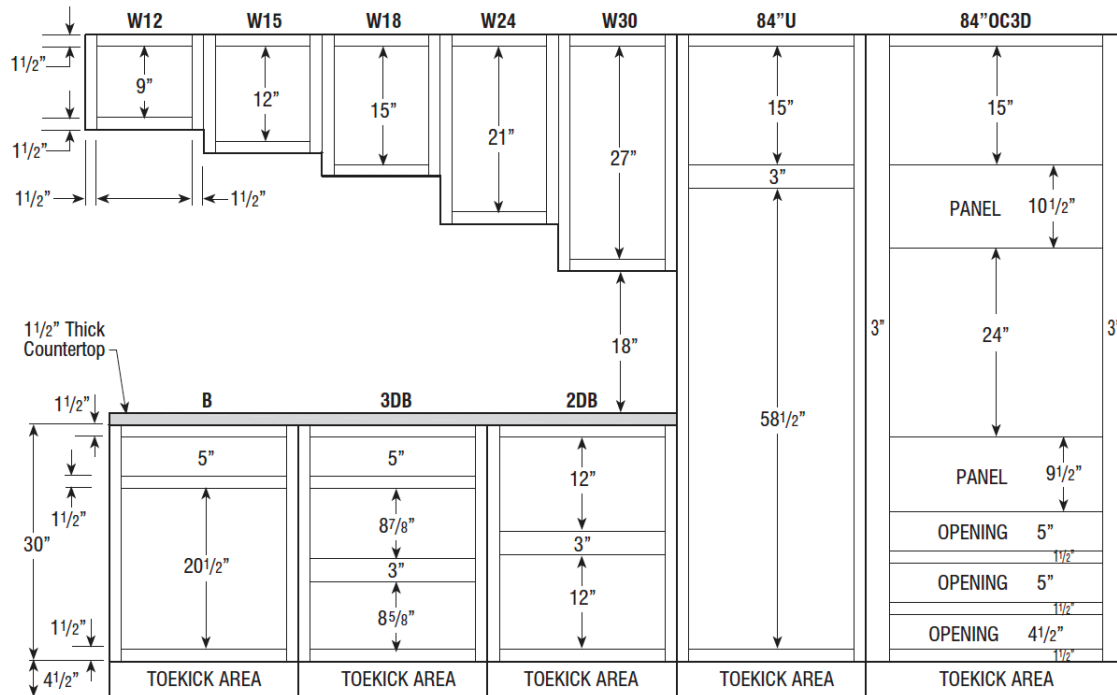


OC3D CABINET

Cabinet Dimensions

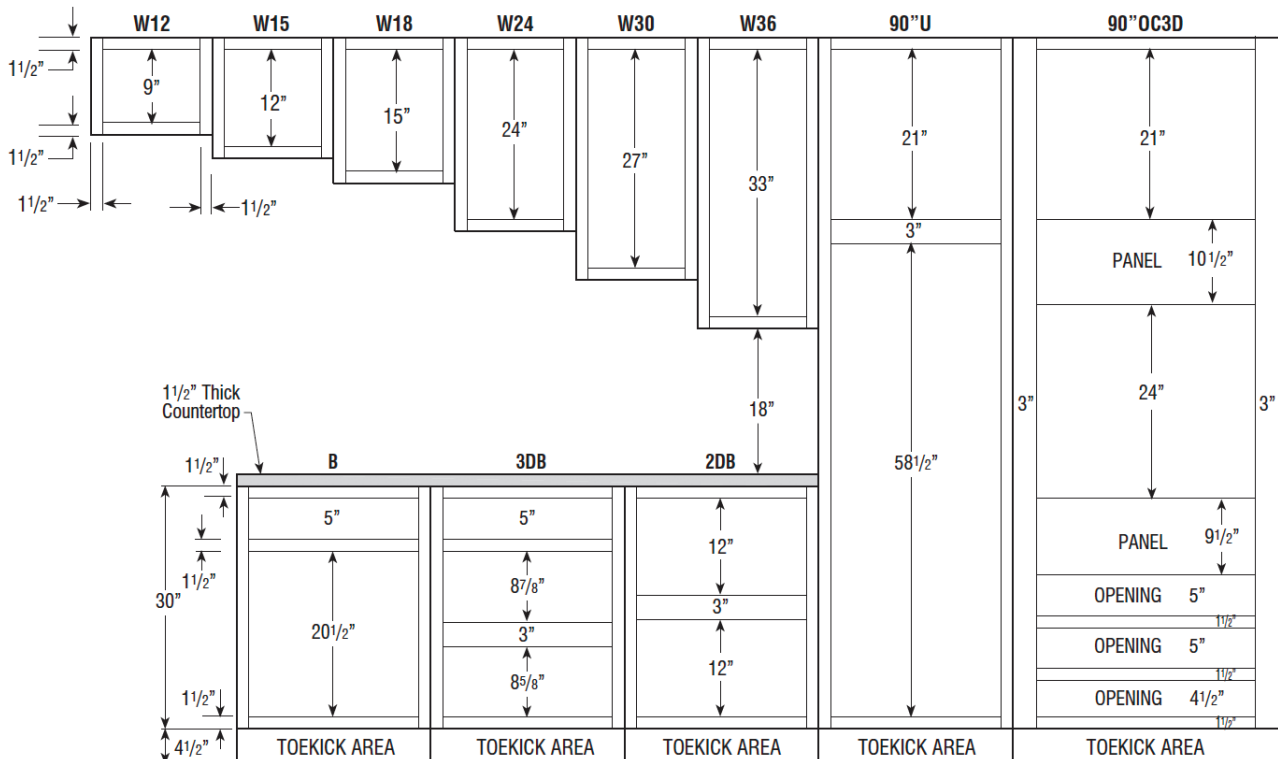
84" HIGH APPLICATION

Number after Wall Cabinet Represents Height of Cabinet



90" HIGH APPLICATION

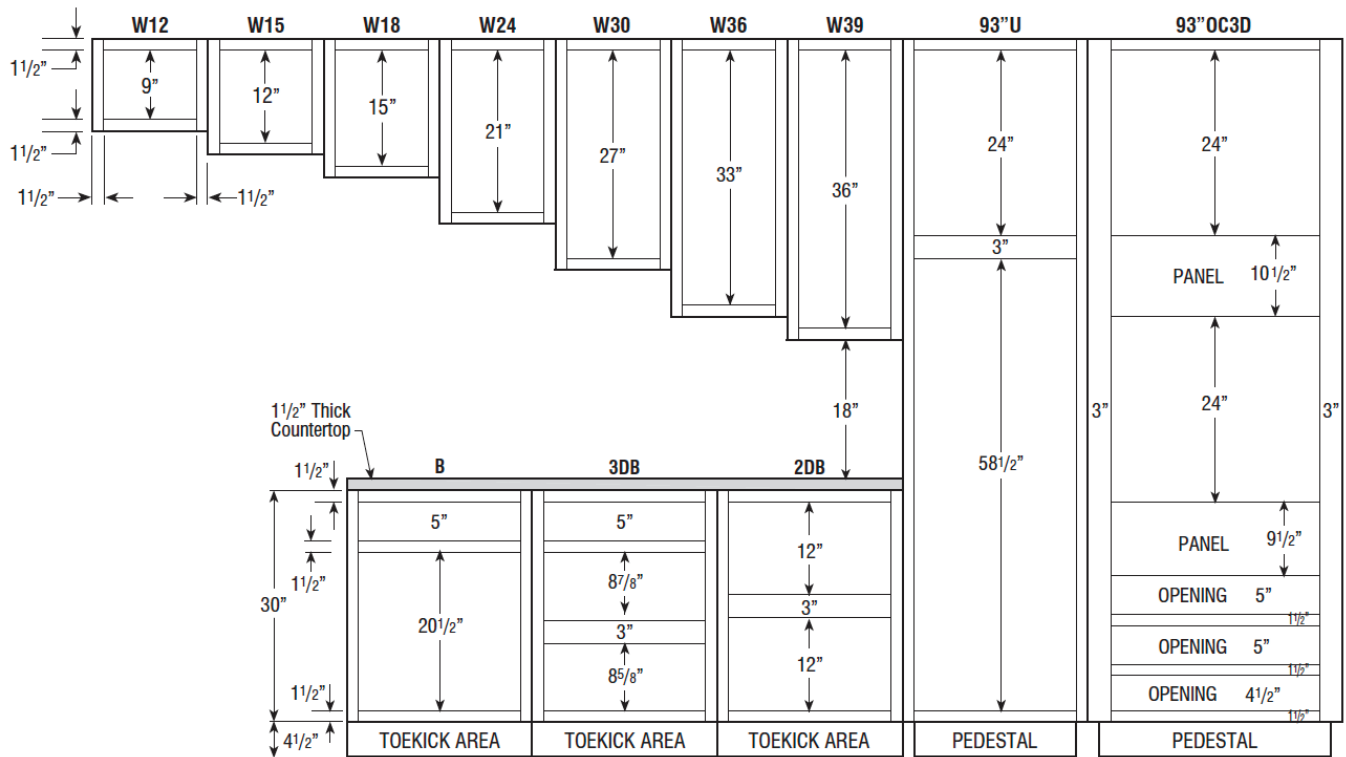
Number after Wall Cabinet Represents Height of Cabinet



Cabinet Dimensions

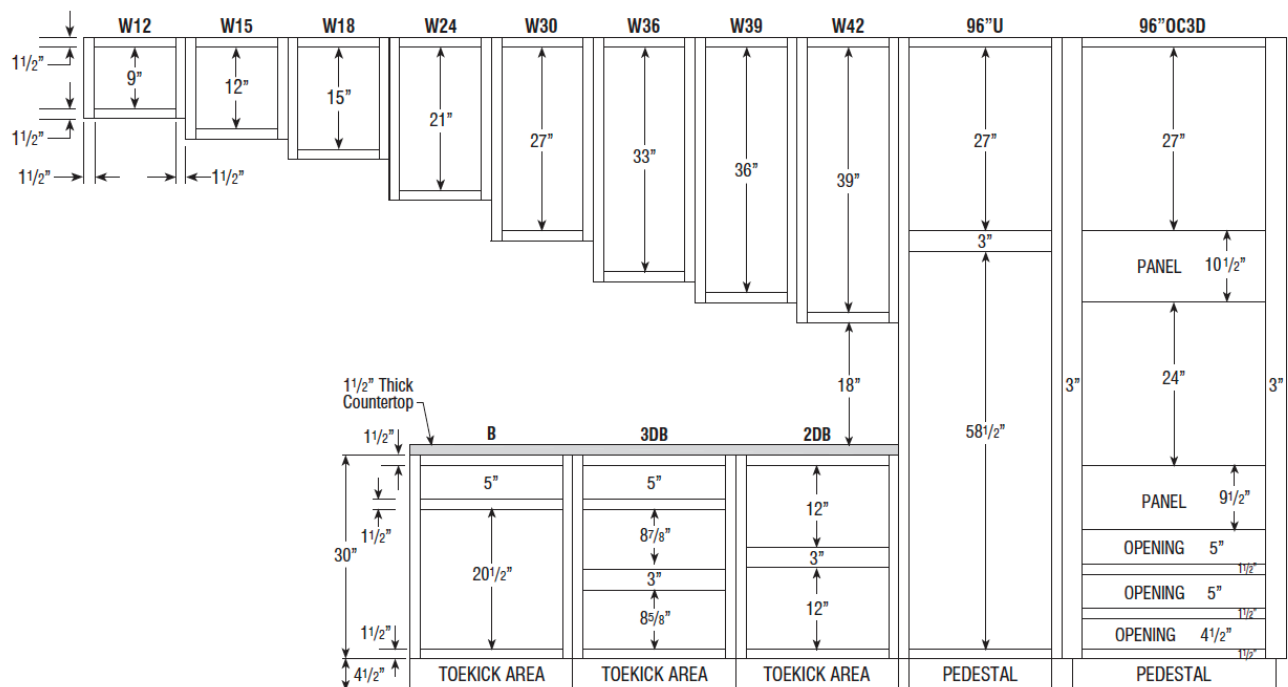
93" HIGH APPLICATION

Number after Wall Cabinet Represents Height of Cabinet



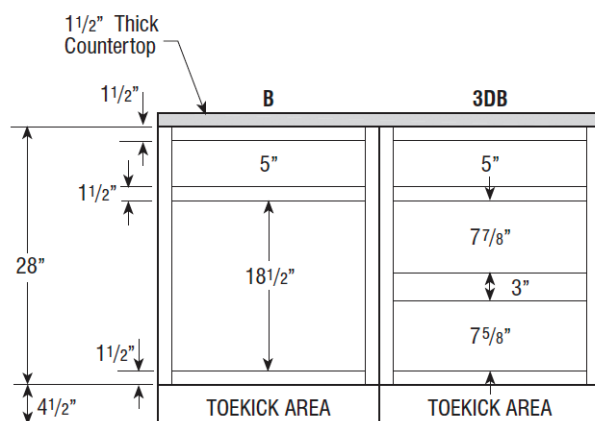
96" HIGH APPLICATION

Number after Wall Cabinet Represents Height of Cabinet

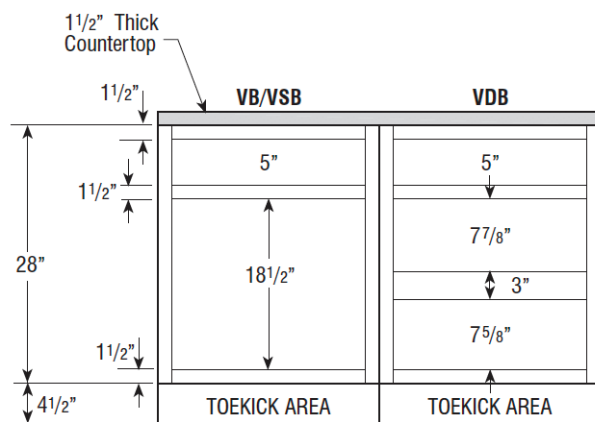


Cabinet Dimensions

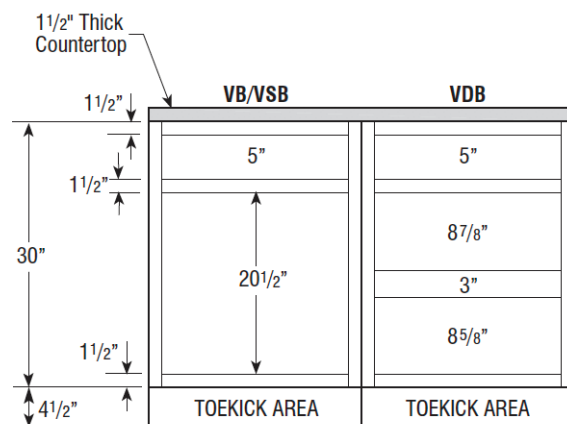
32 1/2" HIGH BASE CABINETS



32 1/2" HIGH VANITY CABINETS



34 1/2" HIGH VANITY CABINETS

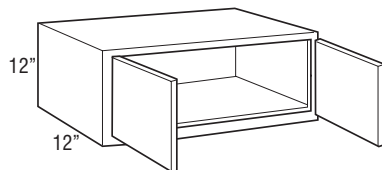


Wall Cabinets

Wall Double Door | 12" High | 12" Deep

Model	Cubic Feet	1	2	3
W3012	3.4	\$216	\$256	\$295
W3312	3.7	\$248	\$293	\$336
W3612	4.0	\$287	\$339	\$391

Not available in Omni Admiral.

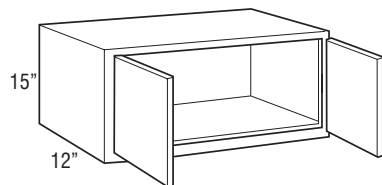


Wall Double Door | 15" High | 12" Deep

Model	Cubic Feet	1	2	3
W2415	3.2	\$285	\$336	\$386
W3015	3.9	\$259	\$306	\$349
W3315	4.2	\$282	\$333	\$386
W3615	4.6	\$309	\$363	\$418

W2415 not available in Classic Bark.

Not available in Omni Admiral.



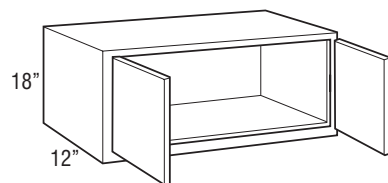
Wall Cabinets

Wall Double Door | 18" High | 12" Deep

Model	Cubic Feet	1	2	3
W2418	4.9	\$293	\$343	\$397
W3018	4.9	\$309	\$363	\$418
W3318	5.3	\$324	\$380	\$438
W3618	5.8	\$331	\$388	\$445

W2418 not available in Classic Bark.

Not available in Omni Admiral.

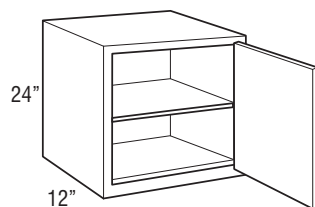


Wall Single Door | 24" High | 12" Deep

Model	Cubic Feet	1	2	3
W2124R	4.6	\$287	\$339	\$391

Cabinet hinged on the right; may be flipped for left hinge application.

Not available in Omni Admiral.

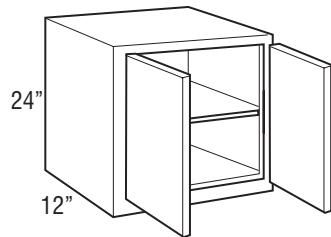


Wall Cabinets

Wall Double Door | 24" High | 12" Deep

Model	Cubic Feet	1	2	3
W2424	5.2	\$312	\$366	\$422
W3024	6.4	\$345	\$404	\$468
W3324	7.0	\$369	\$435	\$499
W3624	7.6	\$386	\$452	\$518

Not available in Omni Admiral.

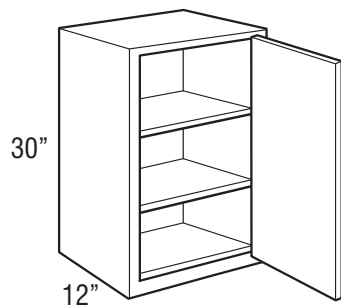


Wall Single Door | 30" High | 12" Deep

Model	Cubic Feet	1	2	3
W930R	2.6	\$244	\$282	\$324
W1230R	3.4	\$248	\$295	\$339
W1530R	4.1	\$262	\$312	\$363
W1830R	4.9	\$285	\$336	\$388
W2130R	5.6	\$309	\$363	\$418

Cabinet hinged on the right; may be flipped for left hinge application.

W930, W1230, W1530 not available in Omni Admiral.

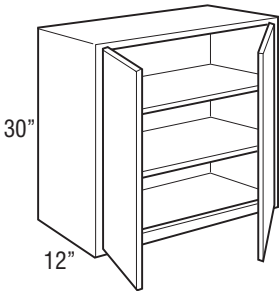


Wall Cabinets

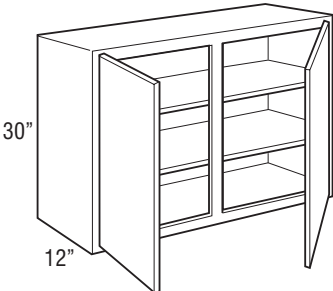
Wall Double Door | 30" High | 12" Deep

Model	Cubic Feet	1	2	3
W2430	6.4	\$336	\$397	\$452
W2730	7.2	\$372	\$438	\$508
W3030	7.9	\$388	\$455	\$520
W3330	8.7	\$427	\$503	\$575
W3630	9.4	\$442	\$518	\$595
W4230	11.0	\$484	\$571	\$657

W3330 and W4230 not available in Omni Admiral.



W2430-W3630



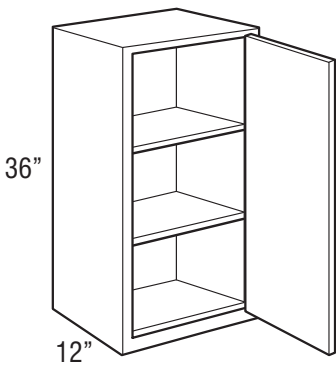
W4230

Wall Cabinets

Wall Single Door | 36" High | 12" Deep

Model	Cubic Feet	1	2	3
W936R	3.1	\$279	\$324	\$376
W1236R	4.0	\$293	\$341	\$397
W1536R	4.9	\$303	\$360	\$409
W1836R	5.8	\$331	\$388	\$445
W2136R	6.7	\$360	\$422	\$484

Cabinet hinged on the right; may be flipped for left hinge application.
W936R, W1236R, and W1536R not available in Omni Admiral.

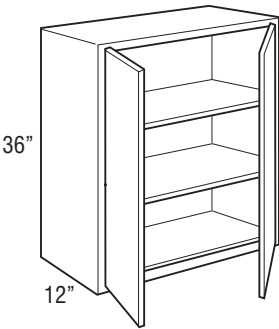


Wall Cabinets

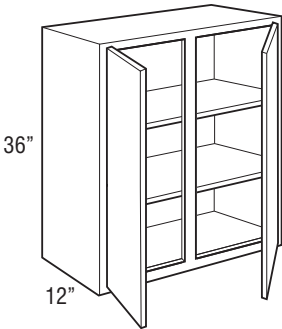
Wall Double Door | 36" High | 12" Deep

Model	Cubic Feet	1	2	3
W2436	7.6	\$391	\$461	\$532
W2736	8.5	\$432	\$508	\$584
W3036	9.4	\$448	\$529	\$610
W3336	10.3	\$499	\$584	\$666
W3636	11.2	\$515	\$600	\$693
W4236	13.1	\$575	\$674	\$777

W2436, W3336, and W4236 not available in Omni Admiral.



W2436-W3636



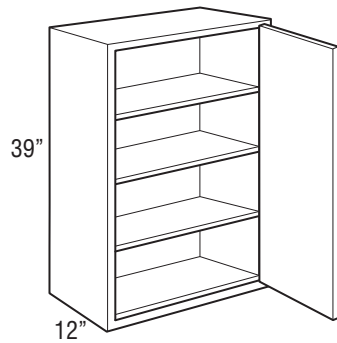
W4236

Wall Cabinets

Wall Single Door | 39" High | 12" Deep

Model	Cubic Feet	1	2	3
W939R	3.3	\$293	\$334	\$386
W1239R	4.3	\$307	\$352	\$404
W1539R	5.3	\$324	\$371	\$425
W1839R	6.3	\$349	\$400	\$461
W2139R	7.3	\$379	\$435	\$502

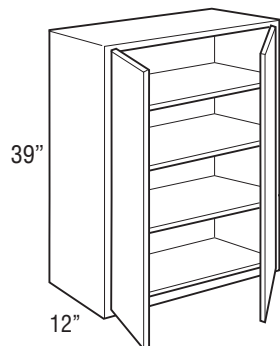
Cabinet hinged on the right; may be flipped for left hinge application.
Not available in Classic Bark and Omni Admiral.



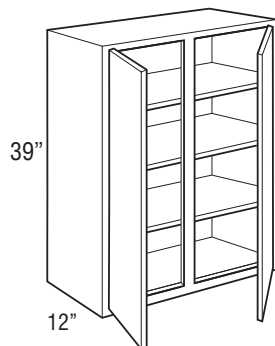
Wall Double Door | 39" High | 12" Deep

Model	Cubic Feet	1	2	3
W2439	8.2	\$411	\$471	\$542
W2739	9.2	\$454	\$521	\$599
W3039	10.2	\$474	\$544	\$626
W3339	11.2	\$525	\$600	\$689
W3639	12.1	\$540	\$618	\$710
W4239	14.1	\$602	\$693	\$798

Not available in Classic Bark and Omni Admiral.



W2439-W3639



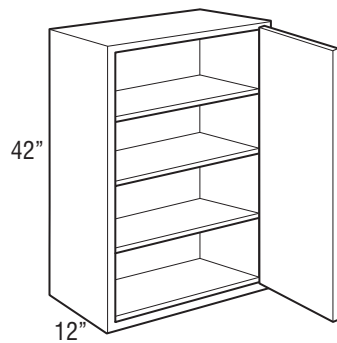
W4239

Wall Cabinets

Wall Single Door | 42" High | 12" Deep

Model	Cubic Feet	1	2	3
W942R	3.6	\$315	\$369	\$425
W1242R	4.6	\$331	\$388	\$445
W1542R	5.7	\$353	\$411	\$475
W1842R	6.7	\$376	\$442	\$513
W2142R	7.8	\$409	\$482	\$553

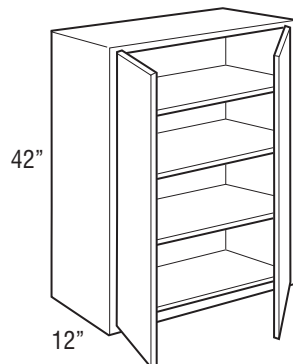
Cabinet hinged on the right; may be flipped for left hinge application.
Not available in Omni Admiral.



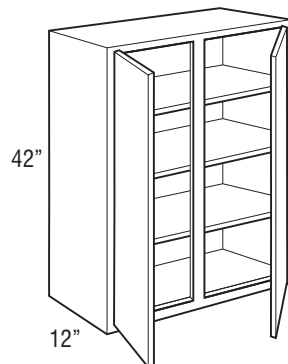
Wall Double Door | 42" High | 12" Deep

Model	Cubic Feet	1	2	3
W2442	8.8	\$442	\$518	\$595
W2742	9.9	\$487	\$575	\$660
W3042	11.0	\$515	\$600	\$693
W3342	12.0	\$566	\$662	\$764
W3642	13.1	\$580	\$684	\$784
W4242	15.2	\$647	\$764	\$881

Not available in Omni Admiral.



W2442-W3642



W4242

Wall Cabinets

Wall Cut-For-Glass Cabinets

RECOMMENDED GLASS SIZE FOR WALL CABINET DOORS

SKU	Omni Door Size	Door Route Size	Glass Size
WCG1530R	14 1/2" x 29 1/2"	11 1/4" x 26 1/4"	11 1/16" x 26 1/16"
WCG1830R	17 1/2" x 29 1/2"	14 1/4" x 26 1/4"	14 1/16" x 26 1/16"
WCG3030	14 11/16" x 29 1/2"	11 7/16" x 26 1/4"	11 1/4" x 26 1/16"
WCG3630	17 11/16" x 29 1/2"	14 7/16" x 26 1/4"	14 1/4" x 26 1/16"
WCG1536R	14 1/2" x 35 1/2"	11 1/4" x 32 1/4"	11 1/16" x 32 1/16"
WCG1836R	17 1/2" x 35 1/2"	14 1/4" x 32 1/4"	14 1/16" x 32 1/16"
WCG3036	14 11/16" x 35 1/2"	11 7/16" x 32 1/4"	11 1/4" x 32 1/16"
WCG3636	17 11/16" x 35 1/2"	14 7/16" x 32 1/4"	14 1/4" x 32 1/16"
WCG1542R	14 1/2" x 41 1/2" 1	1 1/4" x 38 1/4"	11 1/16" x 38 1/16"
WCG1842R	17 1/2" x 41 1/2"	14 1/4" x 38 1/4"	14 1/16" x 38 1/16"
WCG3042	14 11/16" x 41 1/2"	11 7/16" x 38 1/4"	11 1/4" x 38 1/16"
WCG3642	17 11/16" x 41 1/2"	14 7/16" x 38 1/4"	14 1/4" x 38 1/16"

*Recommended glass size dimensions are 3/16" smaller than glass route.

Wall Cut-For-Glass | 30" High | 12" Deep

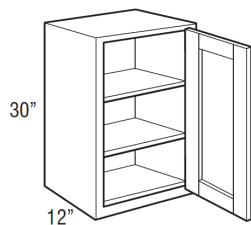
Model	Cubic Feet	1	2	3
WCG1530R	4.1	•	\$351	•
WCG1830R	4.9	•	\$373	•

Cabinet hinged on the right; may be flipped for left hinge application.

Glass not included. Glass clips included with door.

Cabinets will have matching interior.

Not available in Omni Admiral.

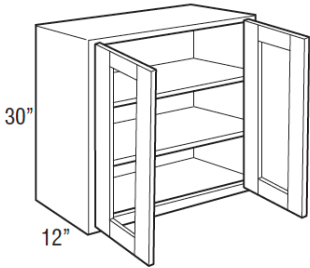


Wall Cabinets

Wall Cut-For-Glass | 30" High | 12" Deep

Model	Cubic Feet	1	2	3
WCG3030	7.9	•	\$539	•
WCG3630	9.4	•	\$599	•

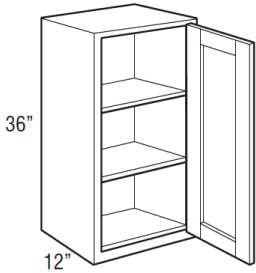
Glass not included. Glass clips included with door.
Cabinets will have matching interior.
Not available in Omni Admiral.



Wall Cut-For-Glass | 36" High | 12" Deep

Model	Cubic Feet	1	2	3
WCG1536R	4.9	•	\$397	•
WCG1836R	5.8	•	\$425	•

Cabinet hinged on the right; may be flipped for left hinge application.
Glass not included. Glass clips included with door.
Cabinets will have matching interior.
Not available in Omni Admiral.

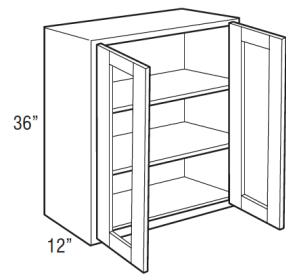


Wall Cabinets

Wall Cut-For-Glass | 36" High | 12" Deep

Model	Cubic Feet	1	2	3
WCG3036	9.4	•	\$610	•
WCG3636	11.2	•	\$678	•

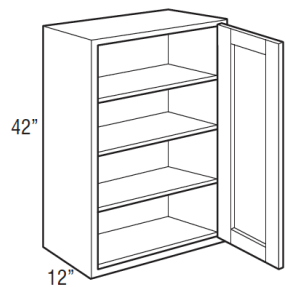
Glass not included. Glass clips included with door.
Cabinets will have matching interior.
Not available in Omni Admiral.



Wall Cut-For-Glass | 42" High | 12" Deep

Model	Cubic Feet	1	2	3
WCG1542R	5.7	•	\$445	•
WCG1842R	6.7	•	\$475	•

Cabinet hinged on the right; may be flipped for left hinge application.
Glass not included. Glass clips included with door.
Cabinets will have matching interior.
Not available in Omni Admiral.

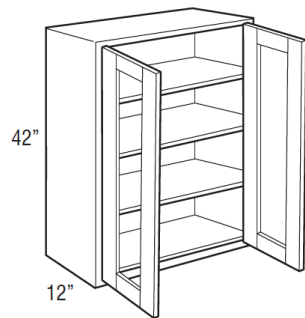


Wall Cabinets

Wall Cut-For-Glass | 42” High | 12” Deep

Model	Cubic Feet	1	2	3
WCG3042	11.0	•	\$678	•
WCG3642	13.0	•	\$760	•

Glass not included. Glass clips included with door.
Cabinets will have matching interior.
Not available in Omni Admiral.



Microwave Wall Cabinet | 18” High

Model	Cubic Feet	1	2*	3
MW3018	4.9	\$400	\$400	\$400

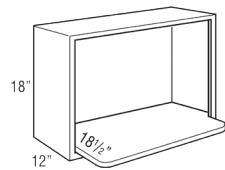
Includes one 3/4” shelf with six mounting screws. Microwave shelf extends beyond the front of the cabinet by 6-1/2”, for a total shelf depth of 18-1/2”.

Microwave cabinet must be attached to wall stud and adjacent cabinets on both sides for support.

Finished matching interior.

Opening Width 27”. Opening height 14-1/2”

Not available in Omni Admiral.



MW3018

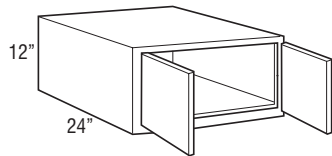
Wall Double Door | 12” High | 24” Deep

Model	Cubic Feet	1	2*	3
W361224	7.4	\$349	\$409	\$473

24” deep cabinets must be supported on three surfaces when mounted.

Load limit is 15 lbs. per square foot of load bearing surface.

Not available in Omni Admiral.



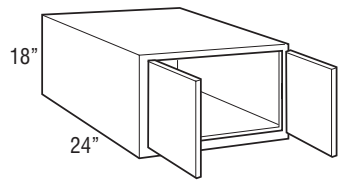
W361224

Wall Cabinets

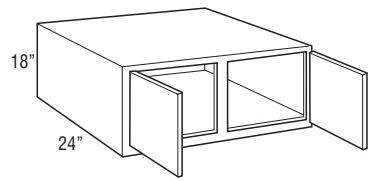
Wall Double Door | 18" High | 24" Deep

Model	Cubic Feet	1	2	3
W361824	10.7	\$378	\$445	\$515
W391824	11.5	\$397	\$465	\$534

24" deep cabinets must be supported on three surfaces when mounted.
Load limit is 15 lbs. per square foot of load bearing surface.
W391824 not available in Omni Admiral.



W361824

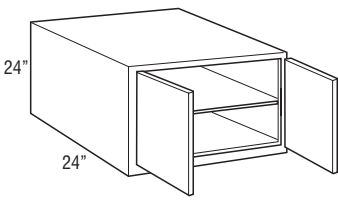


W391824

Wall Double Door | 24" High | 24" Deep

Model	Cubic Feet	1	2	3
W362424	14.0	\$432	\$508	\$584

24" deep cabinets must be supported on three surfaces when mounted.
Load limit is 15 lbs. per square foot of load bearing surface.
Not available in Omni Admiral.



W362424

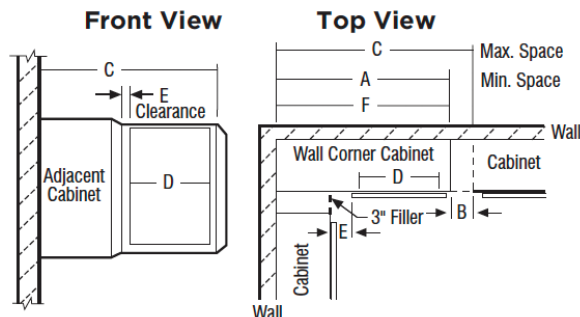
Wall Cabinets

SKU	A Min. Space	B Max. Pull	C Max. Space	D Cabinet Opening	E Full Overlay At Min. At Max.		E Partial Overlay At Min. At Max.		F Actual Cabinet
WC30...	30"	5"	35"	13 1/2"	1 3/4"	6 3/4"	2 1/2"	7 1/2"	30"
WC36...	36"	5"	41"	19 1/2"	1 3/4"	6 3/4"	2 1/2"	7 1/2"	36"
WC42...	42"	4 1/2"	46 1/2"	24"	3 1/4"	7 3/4"	4"	8 1/2"	42"

- Wall corner cabinets may be installed flush to the wall (left) or pulled 3" away from wall (right) to accommodate add dimensions in a kitchen design. In either case, the adjoining run of 12" wall cabinets plus a 3" filler will butt against the solid-wood panel.

- When a cabinet is "pulled" it will use proportionally more space, for example, a 30" wide WC, pulled 2" will use 32" of space.

- Blind side of wall corner cabinets cannot be installed next to a range hood unit due to door interference.



NOTE:
All outside stiles are 1-1/2" wide

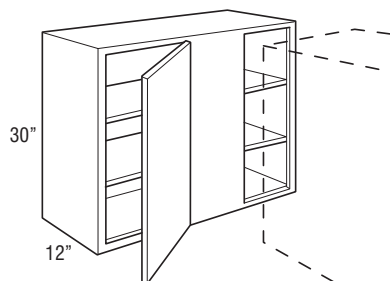
Wall Corner Single Door | 30" High | 12" Deep

Model	Cubic Feet	1	2	3
WC3030S	7.9	\$336	\$397	\$452
WC3630S	9.4	\$372	\$438	\$503

Right blind shown; cabinet may be flipped for left blind application.

Filler required for installation. Must be ordered separately.

Not available in Omni Admiral.

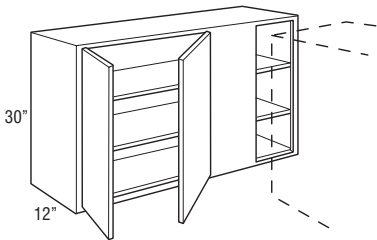


Wall Cabinets

Wall Corner Double Door | 30" High | 12" Deep

Model	Cubic Feet	1	2	3
WC4230S	11.0	\$432	\$508	\$584

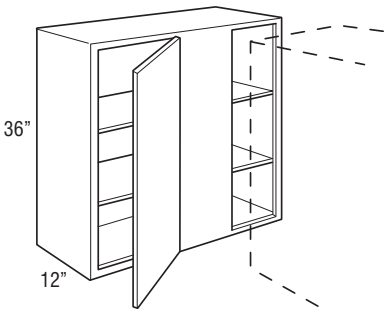
Right blind shown; cabinet may be flipped for left blind application.
Filler required for installation. Must be ordered separately.
Not available in Omni Admiral.



Wall Corner Single Door | 36" High | 12" Deep

Model	Cubic Feet	1	2	3
WC3036S	9.4	\$404	\$478	\$551
WC3636S	11.2	\$442	\$518	\$595

Right blind shown; cabinet may be flipped for left blind application.
Filler required for installation. Must be ordered separately.
Not available in Omni Admiral.



Wall Cabinets

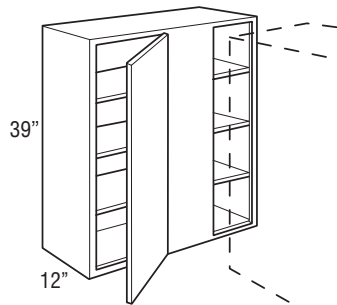
Wall Corner Single Door | 39" High | 12" Deep

Model	Cubic Feet	1	2	3
WC3039S	10.2	\$432	\$496	\$574
WC3639S	12.1	\$475	\$541	\$620

Right blind shown; cabinet may be flipped for left blind application.

Filler required for installation. Must be ordered separately.

Not available in Classic Bark or Omni Admiral.



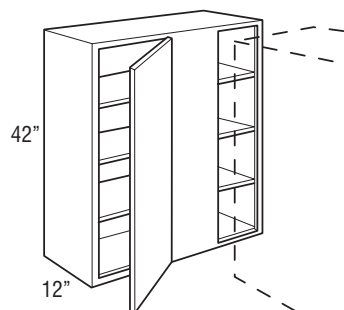
Wall Corner Single Door | 42" High | 12" Deep

Model	Cubic Feet	1	2	3
WC3042S	11.0	\$455	\$534	\$618
WC3642S	13.1	\$499	\$584	\$666

Right blind shown; cabinet may be flipped for left blind application.

Filler required for installation. Must be ordered separately.

Not available in Omni Admiral.

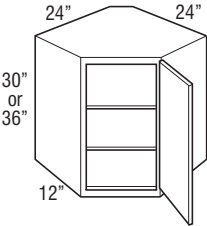


Wall Cabinets

Diagonal Wall | 30" High | 36" High | 12" Deep

Model	Cubic Feet	1	2	3
DW302424R	10.8	\$388	\$455	\$520
DW362424R	12.9	\$465	\$551	\$631

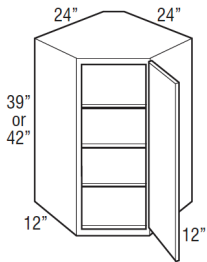
Cabinet hinged on the right; may be flipped for left hinge application.
Cabinets require 24" x 24" of corner wall space.
DW362424R not available in Omni Admiral.



Diagonal Wall | 39" High | 42" High | 12" Deep

Model	Cubic Feet	1	2	3
DW392424R	13.9	\$534	\$633	\$725
DW422424R	14.9	\$561	\$660	\$761

Cabinet hinged on the right; may be flipped for left hinge application.
Cabinets require 24" x 24" of corner wall space.
Not available in Omni Admiral.
DW392424R not available in Classic Bark.



Wall Cabinets

Diagonal Wall Cut-For-Glass Cabinets

RECOMMENDED GLASS SIZE FOR WALL CABINET DOORS

SKU	Omni Door Size	Door Route Size	Glass Size
DWCG302424R	14 1/2" x 29 1/2"	11 1/4" x 26 1/4"	11 1/16" x 26 1/16"
DWCG362424R	14 1/2" x 35 1/2"	11 1/4" x 32 1/4"	11 1/16" x 32 1/16"
DWCG422424R	14 1/2" x 41 1/2"	11 1/4" x 38 1/4"	11 1/16" x 38 1/16"

*Recommended glass size dimensions are 3/16" smaller than glass route.

Diagonal Wall Cut-For-Glass | 30" High | 36" High | 12" Deep

Model	Cubic Feet	1	2	3
DWCG302424R	10.8	•	\$539	•
DWCG362424R	12.9	•	\$631	•

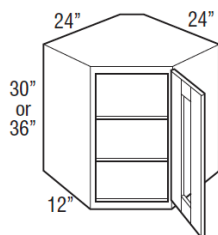
Cabinet hinged on the right; may be flipped for left hinge application.

Cabinets require 24" x 24" of corner wall space.

Glass not included. Glass clips included with door.

Cabinets will have matching interior.

Not available in Omni Admiral.



Diagonal Wall Cut-For-Glass | 42" High | 12" Deep

Model	Cubic Feet	1	2	3
DWCG422424R	14.9	•	\$737	•

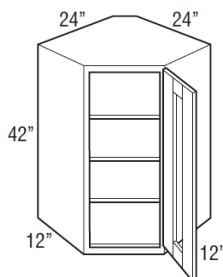
Cabinet hinged on the right; may be flipped for left hinge application.

Cabinets require 24" x 24" of corner wall space.

Glass not included. Glass clips included with door.

Cabinets will have matching interior.

Not available in Omni Admiral.



Wall Cabinets

Easy Reach Wall Corner | 30" High | 36" High | 12" Deep

Model	Cubic Feet	1	2	3
ER30R	12.3	\$493	\$578	\$661
ER36R	14.6	\$592	\$700	\$803

Requires 24" x 24" of corner wall space.

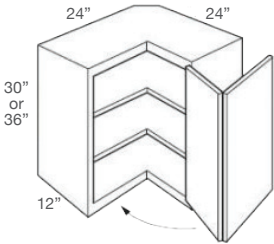
Adjustable shelves.

Cabinet hinges on the right; may be flipped for left hinge application.

Hinged door opens 170°.

Integrated soft-close hinge not included.

Not available in Omni Admiral.



Base Cabinets

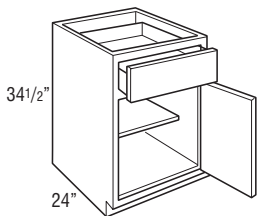
Base Single Door | 34-1/2" High | 24" Deep

Model	Cubic Feet	1	2	3
B9R	5.4	\$287	\$339	\$391
B12R	7.1	\$312	\$366	\$422
B15R	8.7	\$336	\$397	\$452
B18R	10.3	\$363	\$427	\$491
B21R	11.7	\$391	\$461	\$532

Cabinet hinged on the right; door may be flipped for left hinge application.

Roll tray kits available for 15"-21" widths.

B9R not available in Omni Admiral.



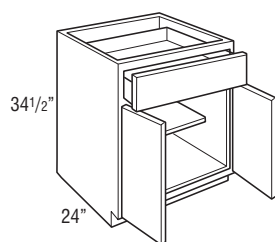
Base Cabinets

Base Double Door | 34-1/2" High | 24" Deep

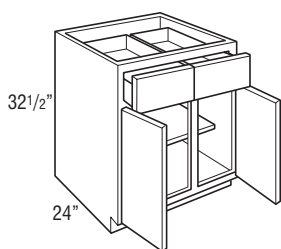
Model	Cubic Feet	1	2	3
B24	13.3	\$452	\$532	\$615
B27	14.9	\$487	\$575	\$660
B30	16.5	\$522	\$621	\$710
B33	18.1	\$568	\$666	\$766
B36	19.6	\$615	\$720	\$830
B42	22.8	\$662	\$779	\$896

Roll tray kits available for 24"-42" widths.

B42 not available in Omni Admiral.



B24-B36



B42

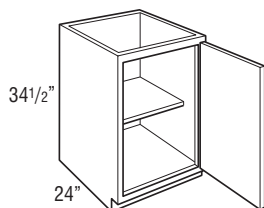
Full Height Base Single Door | 34-1/2" High | 24" Deep

Model	Cubic Feet	1	2	3
B9FHR	5.4	\$281	\$331	\$380
B15FHR	8.5	\$282	\$333	\$386
B18FHR	10.1	\$303	\$360	\$409

Cabinet hinged on the right; door may be flipped for left hinge application.

Roll tray kits available for 15"-18" widths.

B15FHR and B18FHR not available in Omni Admiral.

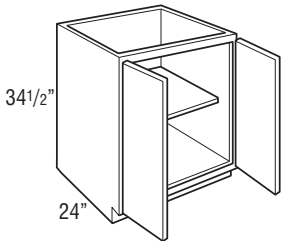


Base Cabinets

Full Height Base Double Door | 34-1/2" High | 24" Deep

Model	Cubic Feet	1	2	3
B24FH	13.3	\$372	\$438	\$503
B30FH	16.5	\$432	\$508	\$584
B36FH	19.6	\$461	\$541	\$624

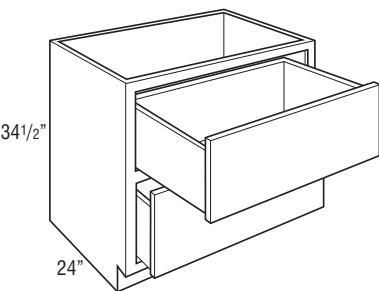
Roll tray kits available for 24"-36" widths.
Not available in Omni Admiral.



2 Drawer Base | 34-1/2" High | 24" Deep

Model	Cubic Feet	1	2	3
2DB30	16.5	\$686	\$810	\$932
2DB36	19.6	\$752	\$885	\$1,017

On door styles with slab drawer fronts, all drawer fronts will be slab.
Not available in Omni Admiral.

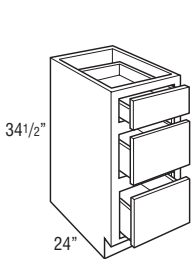


Base Cabinets

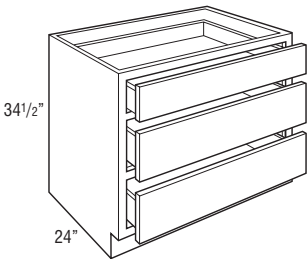
3 Drawer Base | 34-1/2" High | 24" Deep

Model	Cubic Feet	1	2	3
3DB12	7.0	\$438	\$515	\$591
3DB15	8.5	\$478	\$561	\$645
3DB18	10.1	\$520	\$618	\$708
3DB21	11.7	\$575	\$674	\$777
3DB24	13.3	\$631	\$740	\$851
3DB30	16.5	\$686	\$810	\$932
3DB36	19.6	\$752	\$885	\$1,017

On door styles with slab drawer fronts, all drawer fronts will be slab.
3DB12 not available in Omni Admiral.



3DB12-3DB21



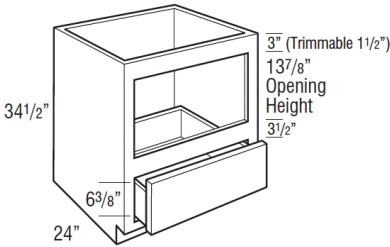
3DB24-3DB36

Base Cabinets

Base Built-In Microwave Cabinet with Drawer | 34-1/2" High | 24" Deep

Model	Cubic Feet	1	2	3
BBMWD30	16.1	\$656	\$776	\$889

The usable cabinet face height between top of drawer front and top of cabinet is 19 1/8" for partial overlay and 19 3/4" for full overlay. Be sure to verify overall appliance height, gap requirements, and cut-out dimensions with cabinet specifications. Metal appliance support brackets included.

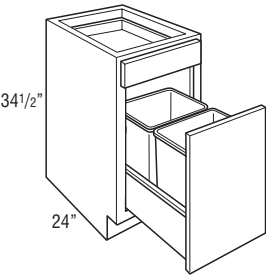


Model	Opening Width	Maximum Width	Opening Height	Maximum Height
BBMWD30	27"	28 1/2"	13 7/8"	16 7/8"

Base Wastebasket | 34-1/2" High | 24" Deep

Model	Cubic Feet	1	2	3
BWB18	10.3	\$595	\$704	\$810

Pull-out features undermount full extension, soft-close guides. Includes two 35 quart gray wastebaskets.



Base Cabinets

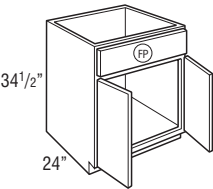
Sink Base | 34-1/2" High | 24" Deep

Model	Cubic Feet	1	2	3
SB24	13.3	\$353	\$411	\$475
SB27	14.9	\$372	\$438	\$508
SB30	16.5	\$391	\$457	\$522
SB33	18.1	\$427	\$505	\$580
SB36	19.6	\$448	\$529	\$610
SB42	22.8	\$475	\$557	\$642

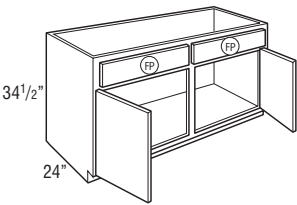
Mini Touch-Up Kit (MTUK) included. MTUK includes small touch-up marker and small fill stick.

Tilt-out tray kits available.

SB24, SB27, SB42 not available in Omni Admiral.



SB24-SB36



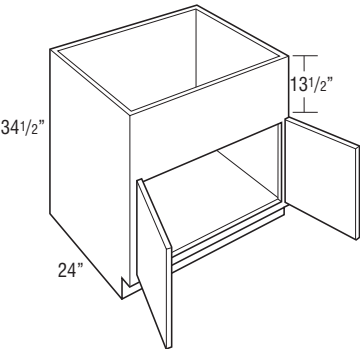
SB42

Base Cabinets

Country Sink Base | 34-1/2" High | 24" Deep

Model	Cubic Feet	1	2	3
CNTYSB36	19.6	\$561	\$660	\$761

13 1/2" panel can be trimmed up to 12".
Mini Touch-Up Kit (MTUK) included. MTUK includes small touch-up marker and small fill stick.
Refer to manufacturer's recommendations for additional support required for apron front sinks.



Base Cabinets

Angled Corner Sink Front | 34-1/2" High

Model	Cubic Feet	1	2	3
ACSF36R	2.9	\$282	\$333	\$386

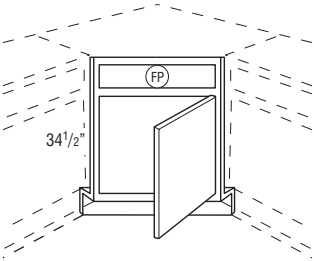
Frame edges beveled at 45°.

Toekick and toekick retainer shipped unattached from the face frame.

Sink base floor not included.

Cabinet hinged on the right; door may be flipped for left hinge application.

Not available in Omni Admiral.



Max. Sink Widths if cut-out is 4" back from face of front frame

Wall Width	Frame	Maximum Sink Width	Maximum Sink Depth
36" x 36"	17"	25 3/4"	27 11/32"

Angled Corner Sink Front Bottom

Model	Cubic Feet	1	2	3
ACSF36	1.0	\$152	\$152	\$152

Designed for use with Angled Corner Sink Front.

3/4" thick.

1-side laminated plywood.



Base Cabinets

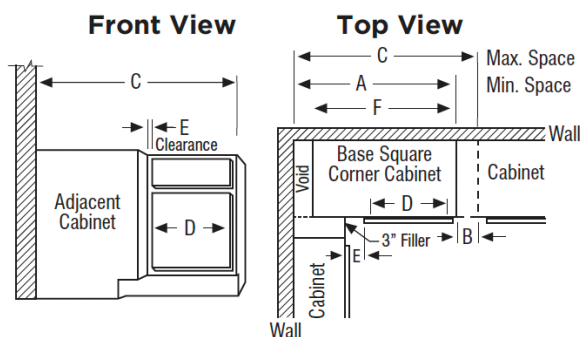
Base Corner Cabinets

SKU	A Min. Space	B Max. Pull	C Max. Space	D Cabinet Opening	E Full Overlay		E Partial Overlay		F Actual Cabinet
BC36S	36"	6"	42"	7 1/2"	1 3/4"	7 3/4"	2 1/2"	8 1/2"	27"
BC42S	42"	6"	48"	13 1/2"	1 3/4"	7 3/4"	2 1/2"	8 1/2"	39"
BC48S	48"	3"	51"	16 1/2"	4 3/4"	7 3/4"	5 1/2"	8 1/2"	45"

- BCs use the wall space the nomenclature implies and may be pulled up to 3" to accommodate odd dimensions in a kitchen.
- Remember to use 3" filler on adjoining cabinets.
- The adjoining run of cabinets will cover the void.

NOTE:

Full overlay styles must be pulled an additional 1 1/2" to ensure proper drawer/pull clearance. 1 1/2" pull is not included in minimum and maximum list.



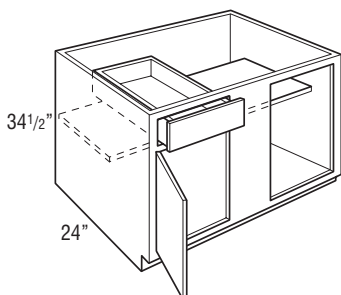
Base Corner Single Door | 34-1/2" High | 24" Deep

Model	Cubic Feet	1	2	3
BC36S	15.0	\$427	\$505	\$580
BC42S	21.3	\$482	\$568	\$655
BC48S	24.5	\$561	\$660	\$761

Right blind shown; door and drawer can be reversed for left blind application.

Filler required for installation. Must be ordered separately.

BC36S and BC48S not available in Omni Admiral.



Base Cabinets

Base Easy Reach | 34-1/2" High | 24" Deep

Model	Cubic Feet	1	2	3
BER33R	26.3	\$663	\$762	\$877
BER36R	29.1	\$708	\$832	\$960

BER33R wall width is 33" x 33". BER36R wall width is 36" x 36".

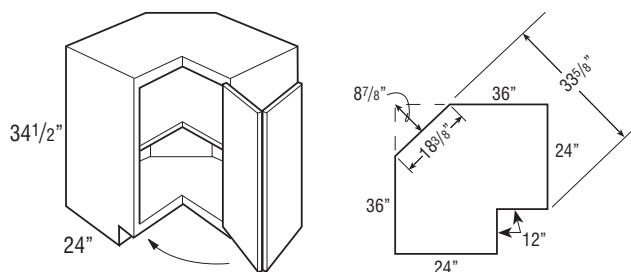
Decorative hardware screws must be countersunk to prevent scratching of adjacent cabinets and face frame of BER.

Not recommended for use next to an appliance deeper than standard cabinet depth.

Soft-close not available.

Cabinet hinged on the right; door may be flipped for left hinge application.

BER33R not available in Classic Bark and Omni Admiral.



Due to the fixed shelves mounting shelves cannot be retrofitted.

Super Lazy Susan | 34-1/2" High | 24" Deep

Model	Cubic Feet	1	2	3
SLS36R	29.1	\$896	\$1,050	\$1,207

Wall width is 36" x 36".

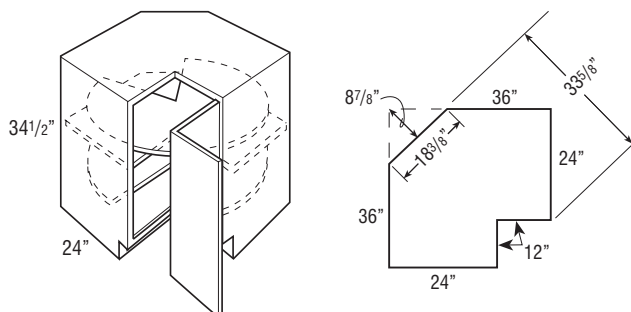
Features two plywood revolving shelves. Lower shelf is mounted to floor. Upper shelf is mounted to fixed shelf.

Decorative hardware screws must be countersunk to prevent scratching adjacent cabinets and face frame of SLS.

Not recommended for use next to an appliance deeper than standard cabinet depth.

Soft-close not available.

Cabinet hinged on the right; door may be flipped for left hinge application.



Due to the fixed shelves mounting shelves cannot be retrofitted.

Base Cabinets

Base Lazy Susan | 34-1/2" High | 24" Deep

Model	Cubic Feet	1	2	3
BLS36R	20.4	\$637	\$750	\$859

Wall width is 36" x 36".

Cabinet is drum-shaped; adjoining cabinets create sides.

Features two white plastic shelves.

Decorative hardware screws must be countersunk to prevent scratching of adjacent cabinets and face frame of BLS.

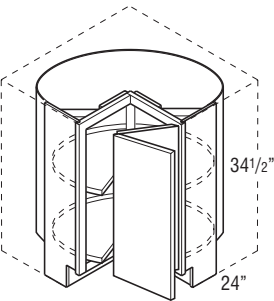
Not recommended for use next to an appliance deeper than standard cabinet depth.

Soft-close not available.

Cabinet hinged on the right; door may be flipped for left hinge application.

Back material made from MDF.

Not available in Omni Admiral.

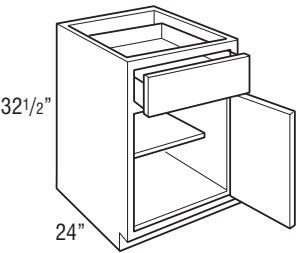


Universal Design Cabinets

Universal Design, Base Single Door | 32-1/2" High | 24" Deep

Model	Cubic Feet	1	2	3
B932.5R	5.0	•	\$339	•
B1232.5R	6.5	•	\$366	•
B1532.5R	8.0	•	\$397	•
B1832.5R	9.4	•	\$427	•
B2132.5R	10.9	•	\$461	•

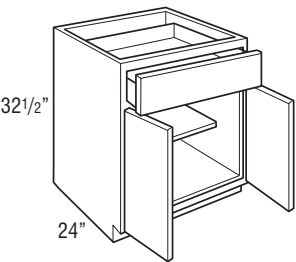
Cabinet hinged on the right; door may be flipped for left hinge application.
Roll tray kits available for 15"-21" widths.
Only available in Omni Snow.



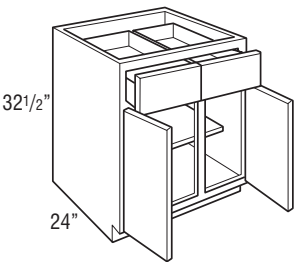
Universal Design, Base Double Door | 32-1/2" High | 24" Deep

Model	Cubic Feet	1	2	3
B2432.5	12.4	•	\$532	•
B3032.5	15.3	•	\$621	•
B3332.5	16.8	•	\$666	•
B3632.5	18.3	•	\$720	•

Roll tray kits available for 24"-36" widths.
Only available in Omni Snow.



B2432.5-B3632.4



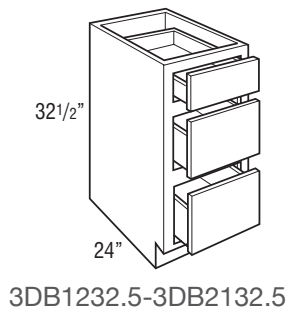
B4232.5

Universal Design Cabinets

Universal Design, 3 Drawer Base | 32-1/2" High | 24" Deep

Model	Cubic Feet	1	2	3
3DB1232.5	6.3	•	\$515	•
3DB1532.5	8.0	•	\$561	•
3DB1832.5	9.4	•	\$618	•

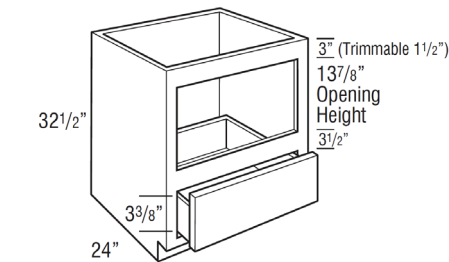
On door styles with slab drawer fronts, all drawer fronts will be slab.
Only available in Omni Snow.



Universal Design, Base Built-In Microwave with Drawer | 32-1/2" High | 24" Deep

Model	Cubic Feet	1	2	3
BBMWD3032.5	15.3	•	\$737	•

Matching interior.
Only available in Omni Snow.
Metal appliance support brackets included.



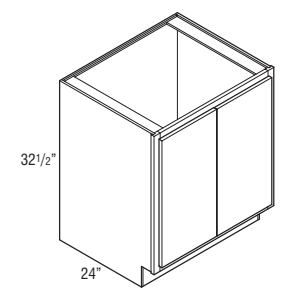
Model	Opening Width	Maximum Width	Opening Height	Maximum Height
BBMWD30	27"	28 1/2"	13 7/8"	16 7/8"

Universal Design Cabinets

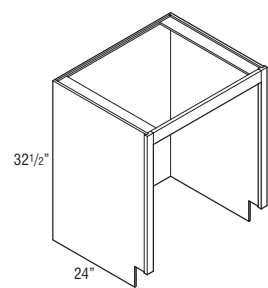
Universal Design, Base Sink Removable | 32-1/2" High | 24" Deep

Model	Cubic Feet	1	2	3
BSR3032.5	13.7	•	\$376	•
BSR3332.5	14.9	•	\$386	•
BSR3632.5	16.4	•	\$397	•

Cabinet must supported on both sides. Not intended for end of run.
Front, cabinet bottom, and toekick are removable.
Mini Touch-Up Kit (MTUK) included. MTUK includes small touch-up marker and small fill stick.
Only available in Omni Snow.



BSR3032.5-BSR3632.5



Shown with front,
cabinet bottom, and
toekick removed.

Universal Design Cabinets

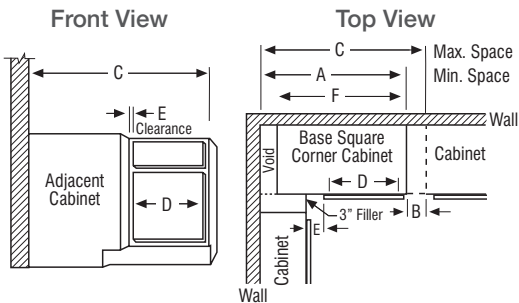
Universal Design Corner Cabinets

SKU	A Min. Space	B Max. Pull	C Max. Space	D Cabinet Opening	E Full Overlay		E Partial Overlay		F Actual Cabinet
	At Min.	At Max.			At Min.	At Max.	At Min.	At Max.	
BC3632.5S	32"	6"	42"	7 1/2"	1 3/4"	7 3/4"	2 1/2"	8 1/2"	27"

- BCs use the wall space the nomenclature implies and may be pulled up to 3" to accommodate odd dimensions in a kitchen.
- Remember to use 3" filler on adjoining cabinets.
- The adjoining run of cabinets will cover the void.

NOTE:

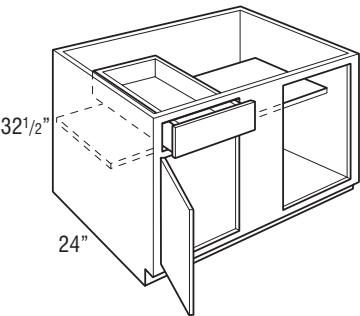
Full overlay styles must be pulled an additional 1 1/2" to ensure proper drawer/pull clearance. 1 1/2" pull is not included in minimum and maximum list.



Universal Design, Base Corner Single Door | 32-1/2" High | 24" Deep

Model	Cubic Feet	1	2	3
BC3632.5S	14.1	•	\$505	•

Right blind shown; door and drawer can be reversed for left blind application.
Filler required for installation. Must be ordered separately.
Only available in Omni Snow.

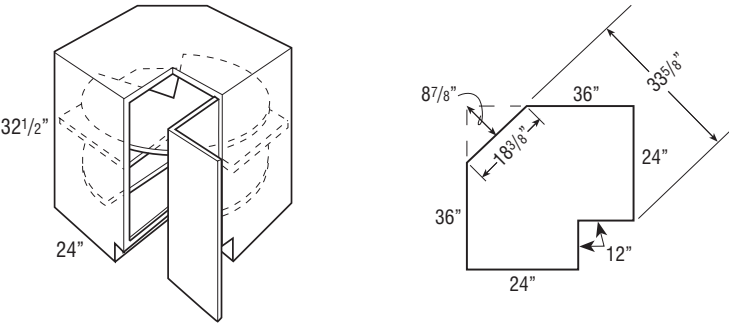


Universal Design Cabinets

Universal Design, Super Lazy Susan | 32-1/2" High | 24" Deep

Model	Cubic Feet	1	2	3
SLS3632.5R	18.4	•	\$1,050	•

Wall width is 36" x 36".
Features two plywood revolving shelves. Lower shelf is mounted to floor. Upper shelf is mounted to fixed shelf.
Decorative hardware screws must be countersunk to prevent scratching adjacent cabinets and face frame of SLS.
Not recommended for use next to an appliance deeper than standard cabinet depth.
Soft-close not available.
Cabinet hinged on the right; door may be flipped for left hinge application.
Only available in Omni Snow.

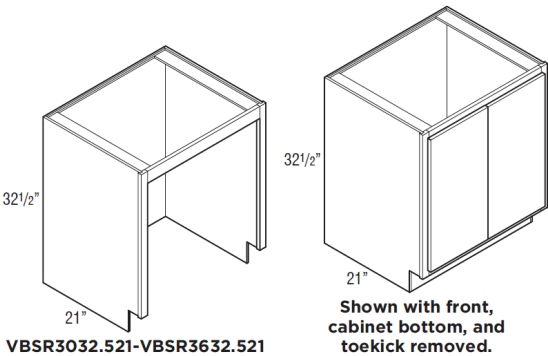


Due to the fixed shelves mounting shelves cannot be retrofitted.

Universal Design, Vanity Base Sink Removable | 32-1/2" High | 21" Deep

Model	Cubic Feet	1	2	3
VBSR3032.521	13.7	•	\$484	•
VBSR3332.521	14.9	•	\$498	•
VBSR3632.521	16.3	•	\$510	•

Cabinet must be supported on both sides. Not intended for end of run.
Front, cabinet bottom, and toekick are removable.
Mini Touch-Up Kit (MTUK) included. MTUK includes small touch-up marker and small fill stick.
Only available in Omni Snow.

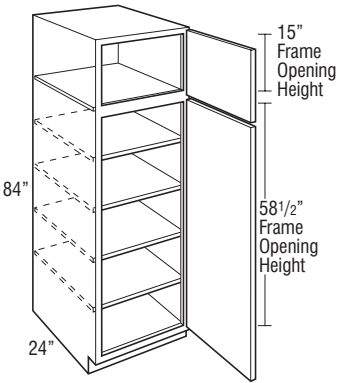


Tall Cabinets

18" Wide Utility Single Door | 84" High | 24" Deep

Model	Cubic Feet	1	2	3
U188424R	23.4	\$803	\$943	\$1,085

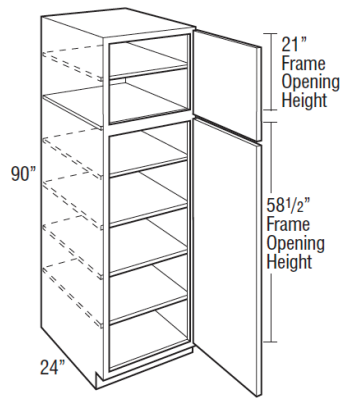
Roll tray kits available.
Cabinet hinged on the right; door may be flipped for left hinge application.



18" Wide Utility Single Door | 90" High | 24" Deep

Model	Cubic Feet	1	2	3
U189024R	25.4	\$896	\$1,050	\$1,207

Roll tray kits available.
Cabinet hinged on the right; door may be flipped for left hinge application.

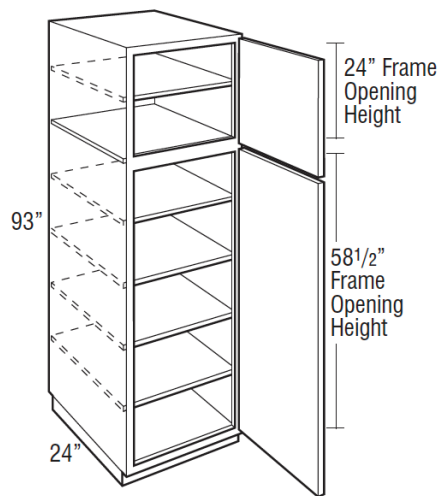


Tall Cabinets

18" Wide Utility Single Door | 93" High | 24" Deep

Model	Cubic Feet	1	2	3
U189324R	26.1	\$911	\$1,069	\$1,231

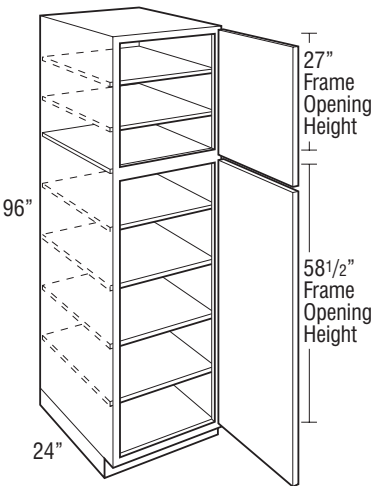
Separate pedestal base included on 93" tall.
Roll tray kits available.
Cabinet hinged on the right; door may be flipped for left hinge application.
Not available in Classic Bark and Omni Admiral.



18" Wide Utility Single Door | 96" High | 24" Deep

Model	Cubic Feet	1	2	3
U189624R	27.0	\$998	\$1,173	\$1,349

Separate pedestal base included on 96" tall.
Roll tray kits available.
Cabinet hinged on the right; door may be flipped for left hinge application.
Not available in Omni Admiral.

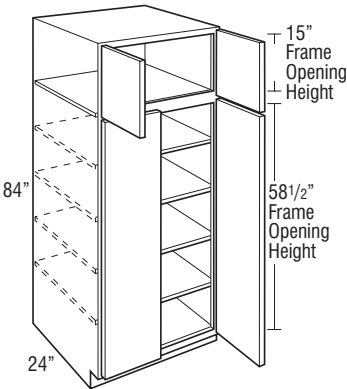


Tall Cabinets

24" Wide Utility Double Door | 84" High | 24" Deep

Model	Cubic Feet	1	2	3
U248424	30.9	\$975	\$1,151	\$1,325

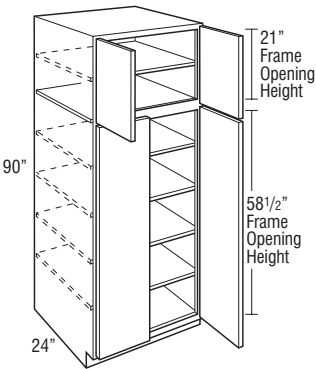
Roll tray kits available.
Not available in Omni Admiral.



24" Wide Utility Double Door | 90" High | 24" Deep

Model	Cubic Feet	1	2	3
U249024	33.4	\$1,096	\$1,289	\$1,480

Roll tray kits available.
Not available in Omni Admiral.

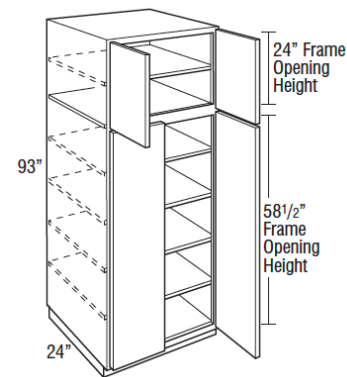


Tall Cabinets

24" Wide Utility Double Door | 93" High | 24" Deep

Model	Cubic Feet	1	2	3
U249324	34.5	\$1,118	\$1,315	\$1,510

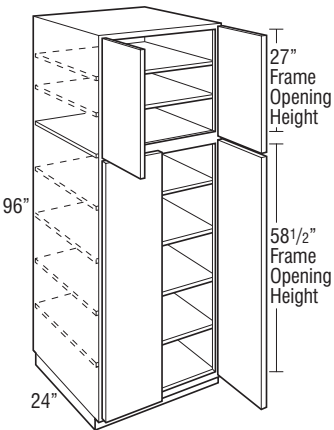
Separate pedestal base included on 93" tall.
Roll tray kits available.
Not available in Classic Bark and Omni Bark.



24" Wide Utility Double Door | 96" High | 24" Deep

Model	Cubic Feet	1	2	3
U249624	35.6	\$1,228	\$1,445	\$1,659

Separate pedestal base included on 96" tall.
Roll tray kits available.
Not available in Omni Admiral.

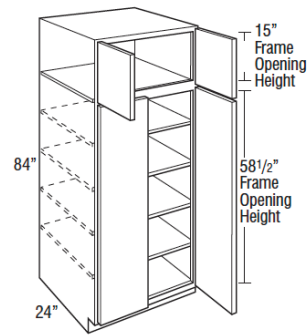


Tall Cabinets

30" Wide Utility Double Door | 84" High | 24" Deep

Model	Cubic Feet	1	2	3
U308424	43.0	•	\$1,360	\$1,563

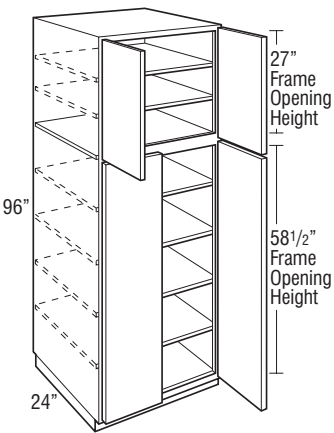
Roll tray kits available.
Not available in Omni Admiral.



30" Wide Utility Double Door | 90" High | 24" Deep

Model	Cubic Feet	1	2	3
U309024	46.0	•	\$1,527	\$1,755

Roll tray kits available.
Not available in Omni Admiral.

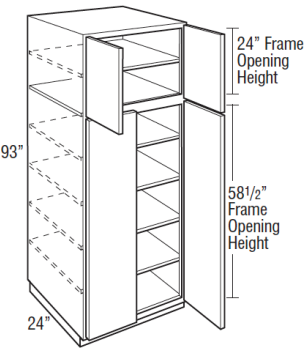


Tall Cabinets

30" Wide Utility Double Door | 93" High | 24" Deep

Model	Cubic Feet	1	2	3
U309324	46.5	•	\$1,622	\$1,864

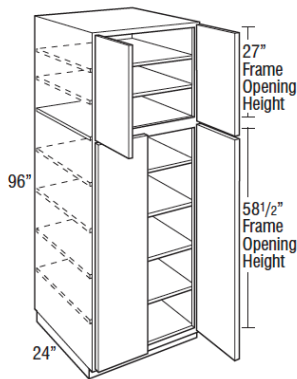
Separate pedestal base included on 93" tall.
Roll tray kits available.
Not available in Omni Admiral.



30" Wide Utility Double Door | 96" High | 24" Deep

Model	Cubic Feet	1	2	3
U309624	49.0	•	\$1,716	\$1,973

Separate pedestal base included on 96" tall.
Roll tray kits available.
Not available in Omni Admiral.

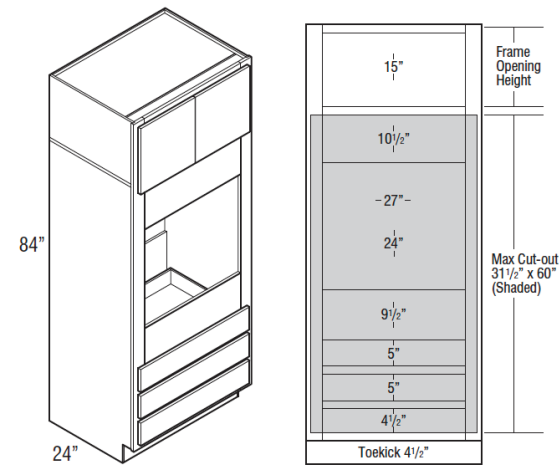


Tall Cabinets

33" Wide Single Oven 3 Drawers | 84" High | 24" Deep

Model	Cubic Feet	1	2	3
OC3D338424	47.7	\$1,279	\$1,501	\$1,725

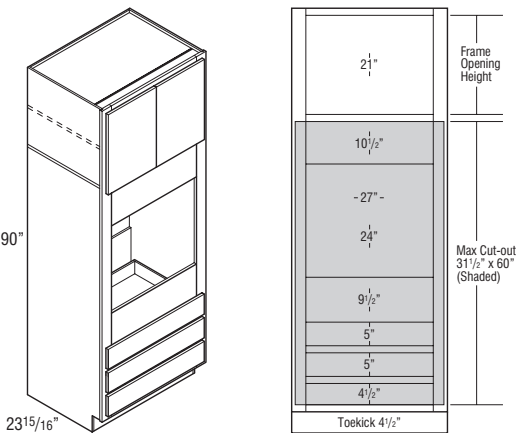
Oven cabinets feature an open back in cut-out area designed to improve field appliance installation.
Metal appliance support brackets included for 24" deep cabinets.
Confirm a heat shield is built into your appliance by the manufacturer.
Not available in Omni Graphite, Omni Mineral, and Omni Snow.



33" Wide Single Oven 3 Drawers | 90" High | 24" Deep

Model	Cubic Feet	1	2	3
OC3D339024	51.0	\$1,497	\$1,760	\$2,024

Oven cabinets feature an open back in cut-out area designed to improve field appliance installation.
Metal appliance support brackets included for 24" deep cabinets.
Confirm a heat shield is built into your appliance by the manufacturer.
Not available in Omni Admiral.



Tall Cabinets

33” Wide Single Oven 3 Drawers | 93” High | 24” Deep

Model	Cubic Feet	1	2	3
OC3D339324	52.6	\$1,531	\$1,802	\$2,073

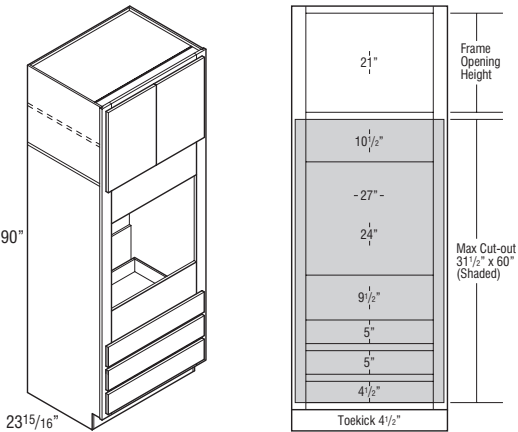
Oven cabinets feature an open back in cut-out area designed to improve field appliance installation.

Metal appliance support brackets included for 24” deep cabinets.

Separate pedestal base included on 93” tall.

Confirm a heat shield is built into your appliance by the manufacturer.

Not available in Classic Bark and Omni Admiral.



33” Wide Single Oven 3 Drawers | 96” High | 24” Deep

Model	Cubic Feet	1	2	3
OC3D339624	54.3	\$1,685	\$1,985	\$2,283

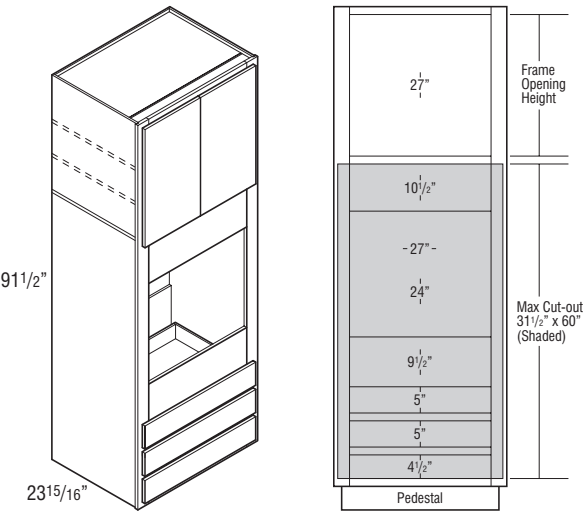
Oven cabinets feature an open back in cut-out area designed to improve field appliance installation.

Metal appliance support brackets included for 24” deep cabinets.

Separate pedestal base included on 96” tall.

Confirm a heat shield is built into your appliance by the manufacturer.

Not available in Omni Admiral.

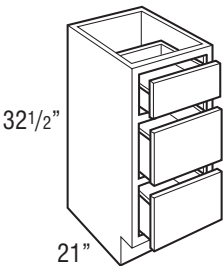


Vanity Cabinets

Vanity Drawer Base | 32-1/2" High | 21" Deep

Model	Cubic Feet	1	2	3
VDB1232.521	5.7	\$425	\$499	\$571
VDB1532.521	7.1	\$465	\$548	\$631
VDB1832.521	8.4	\$508	\$595	\$686

On door styles with slab drawer fronts, all drawer fronts will be slab.
Not available in Omni Admiral.



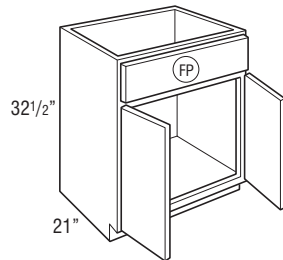
Vanity Cabinets

Vanity Sink Base | 32-1/2" High | 21" Deep

Model	Cubic Feet	1	2	3
VSB2432.521	11.0	\$339	\$401	\$461
VSB3032.521	13.7	\$378	\$445	\$515
VSB3632.521	16.3	\$438	\$515	\$591

Tilt-out tray kits available.

Not available in Omni Admiral.

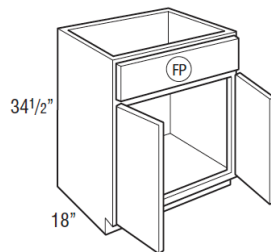


Vanity Sink Base | 34-1/2" High | 18" Deep

Model	Cubic Feet	1	2	3
VSB243418	10.2	•	\$486	•

Tilt-out tray kits available.

Only available in Omni Snow.

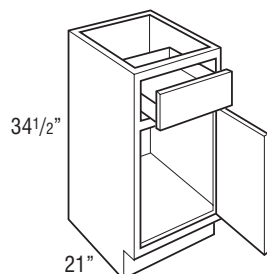


Vanity Base Single Door | 34-1/2" High | 21" Deep

Model	Cubic Feet	1	2	3
VB153421R	7.6	\$324	\$380	\$438
VB183421R	9.0	\$353	\$411	\$475

Cabinet hinged on the right; door may be flipped for left hinge application.

Not available in Omni Admiral.

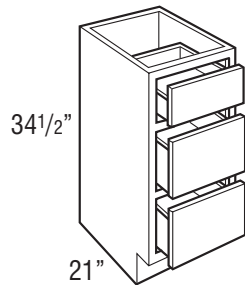


Vanity Cabinets

Vanity Drawer Base | 34-1/2" High | 21" Deep

Model	Cubic Feet	1	2	3
VDB123421	6.2	\$425	\$499	\$571
VDB153421	7.6	\$465	\$548	\$631
VDB183421	8.9	\$508	\$595	\$686

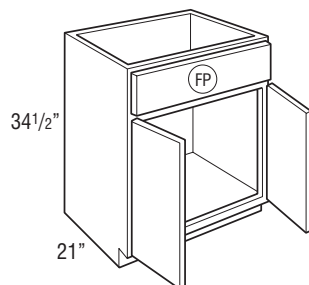
On door styles with slab drawer fronts, all drawer fronts will be slab.
Not available in Omni Admiral.



Vanity Sink Base | 34-1/2" High | 21" Deep

Model	Cubic Feet	1	2	Admiral	3
VSB243421	11.9	\$339	\$401	\$482	\$461
VSB303421	14.7	\$378	\$445	\$534	\$515
VSB363421	17.5	\$438	\$515	\$617	\$591

Tilt-out tray kits available.
* See Admiral Only Price Column

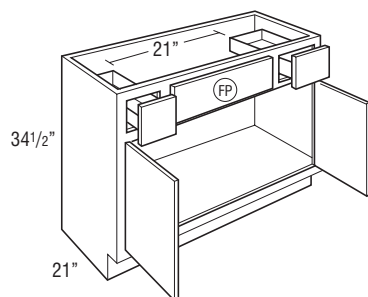


Vanity Cabinets

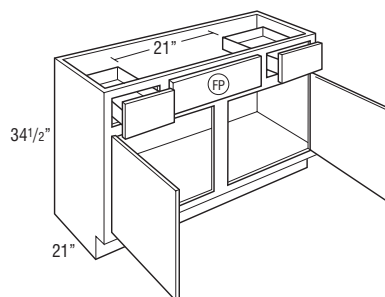
Vanity Sink Drawer Base | 34-1/2" High | 21" Deep

Model	Cubic Feet	1	2	3
2VSD363421	17.4	\$580	\$684	\$784
2VSD423421	20.3	\$631	\$743	\$854
2VSD483421CS	23.1	\$690	\$814	\$936

Not available in Omni Admiral.



2VSD363421



2VSD423421-2VSD483421CS

Vanity Sink Drawer Base | 34-1/2" High | 21" Deep

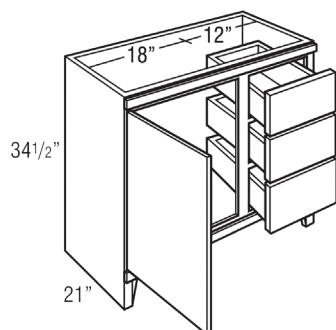
Model	Cubic Feet	1	2	3
3VSD303421	14.7	•	\$733	\$846
3VSD363421	17.5	•	\$854	\$980

Top drawer is scoop drawer; 6 inches from top.

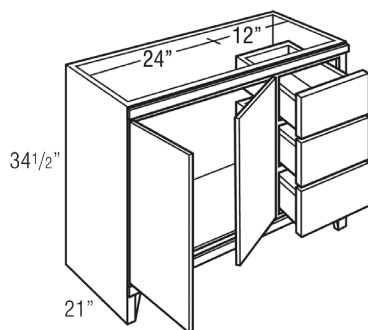
Matching finished interior.

3VSD has open toekick. Toeboard can be used to cover if not desired.

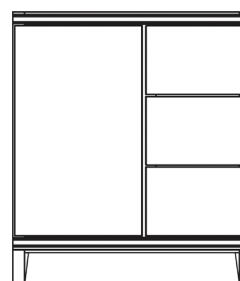
Door(s) are on the left and drawers are on the right; cannot be flipped. Not available in Omni Admiral.



3VSD303421



3VSD363421 Butt doors



Front view

Fillers

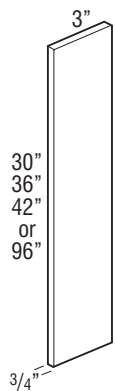
3" Filler

Model	Cubic Feet	Price
F330	0.2	\$44
F336	0.2	\$49
F342	0.2	\$55
TF396FH	0.5	\$124

3/4" thick.

F342, TF396FH not available in Admiral.

Finished on front and two long edges (backs are not finished).



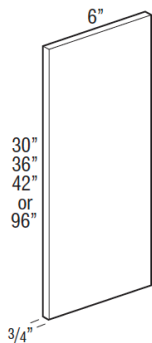
6" Filler

Model	Cubic Feet	Price
F630	0.2	\$82
F636	0.2	\$90
F642	0.2	\$102
TF696FH	0.5	\$197

3/4" thick.

Not available in Admiral.

Finished on front and two long edges (backs are not finished).



Skins

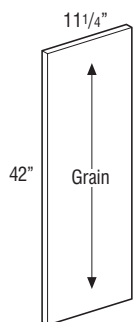
End Panel Skins

Model	Cubic Feet	Price
WEPS42LAM14	0.5	\$87
BEPS34.514	0.7	\$79
TEPS96LAM14	2.7	\$152

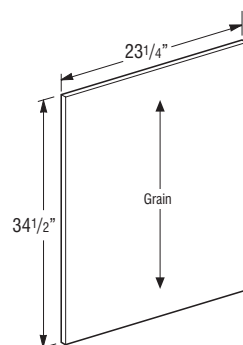
1/4" thick laminated furniture board.

One side matching exterior and the other side Natural Maple laminate interior.

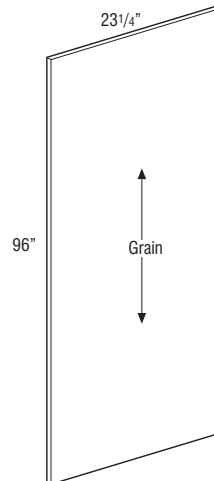
Not available in Admiral.



WEPS42LAM14



BEPS34.514



TEPS96LAM14

Finished Back Skins

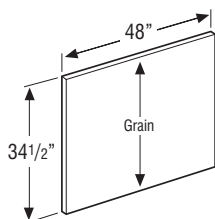
Model	Cubic Feet	Price
BP4834.514	1.1	\$90

1/4" thick laminated furniture board.

Grain runs with 34.5".

One side matching exterior and the other side is unfinished.

Not available in Admiral.



Skins

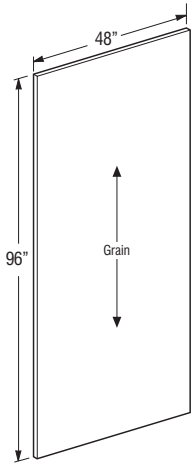
Finished Back Skins

Model	Cubic Feet	Price
BP4896LAM14	2.7	\$197

1/4" thick laminated furniture board.

Grain runs with 96".

One side matching exterior and the other side is unfinished.

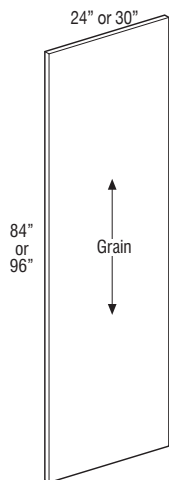


Panels

Tall End Panel

Model	Cubic Feet	Price
TEP2484LAM	1.3	\$216
TEP2496LAM	1.3	\$259
TEP3096LAM	1.3	\$324

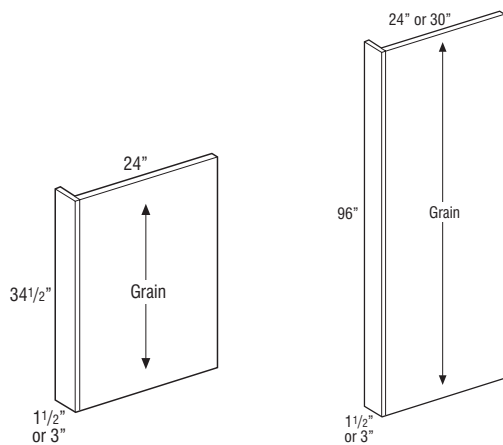
3/4" thick laminated furniture board.
Panels are edgebanded on front edge.
Matching exterior on both sides.
Not available in Admiral.



Base and Tall Panels with Filler Attached

Model	Cubic Feet	Price
BEPF1.5LAM	1.7	\$116
BEPF3LAM	1.7	\$140
TEP2496F1.5	1.3	\$299
TEP3096F1.5	1.3	\$448

1/2" thick laminated furniture board.
All panels have Natural Maple laminate interior.
BEPF1.5LAM and TEP3096F1.5 not available in Admiral.



BEPF1.5LAM-
BEPF3LAM

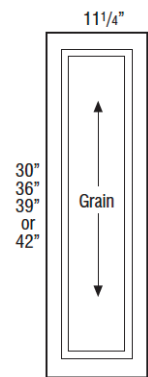
TEP2496F1.5-
TEP3096F1.5

Panels

Wall End Decorative Door Panel Kit

Model	Cubic Feet	1	2	3
WED1230	0.8	•	\$153	\$177
WED1236	0.9	•	\$175	\$203
WED1239	1.0	•	\$188	\$216
WED1242	1.1	•	\$201	\$231

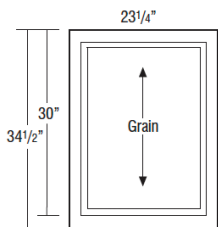
Door panel kits include Wall End Panel Skin and doors with attachment screws for field installation.
WED1239 and WED1242 not available in Omni Admiral.



Base End Decorative Door Panel Kit

Model	Cubic Feet	1	2	3
BEDSD	1.6	•	\$231	\$263

Door panel kits include Base End Panel Skin and doors with attachment screws for field installation.

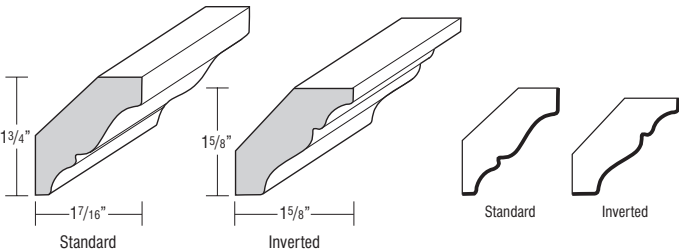


Moulding

Crown Moulding, Solid Wood Crown

Model	Cubic Feet	Price
SWCRM8	0.5	\$110

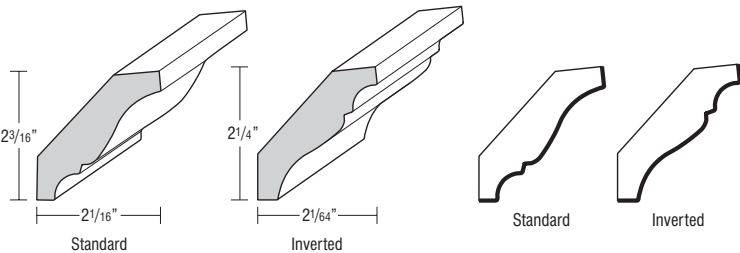
Face mounts on Partial Overlay doors.
May be face mounted on Full Overlay if used with a cleat.
One 8' section.
Moulding can be used as standard or inverted.
Finished edges indicated by bold lines on side view drawings.



Crown Moulding, Solid Wood Large Crown

Model	Cubic Feet	Price
SWLCRM8	0.5	\$142

Face mounts on Partial Overlay doors.
May be face mounted on Full Overlay if used with a cleat.
One 8' section.
Moulding can be used as standard or inverted.
Finished edges indicated by bold lines on side view drawings.
Not available in Admiral.

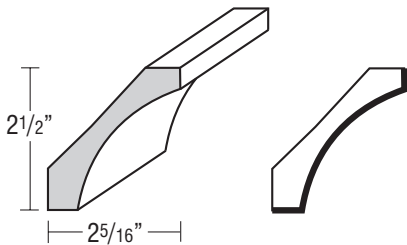


Moulding

Crown Moulding, Small Cove Crown

Model	Cubic Feet	Price
SMCOVECROWN8	1.0	\$179

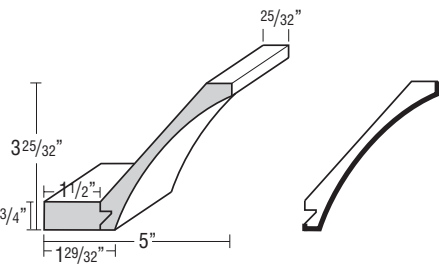
One 8' section.
Finished edges indicated by bold lines on side view drawings.



Crown Moulding, Cove Crown

Model	Cubic Feet	Price
COVECROWN8	1.0	\$221

One 8' section.
Cleat shipped unattached can be used for top mount or face frame applications.
Finished edges indicated by bold lines on side view drawings.
Not available in Admiral.



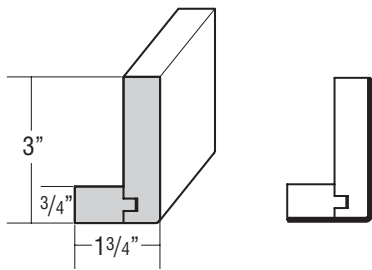
Moulding

Starter Moulding, Shaker

Model	Cubic Feet	Price
STRS8	1.0	\$345

One 8' section.

Finished edges indicated by bold lines on side view drawings.

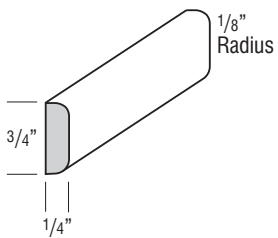


Accent Moulding, Flat Scribe

Model	Cubic Feet	Price
SM8	0.5	\$44

One 8' section.

Finished edges indicated by bold lines on side view drawings.



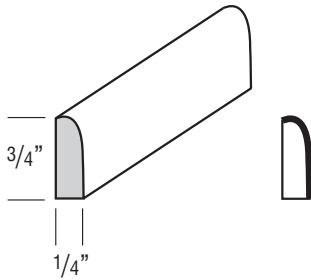
Moulding

Accent Moulding, Small Scribe

Model	Cubic Feet	Price
SSM8	0.5	\$44

One 8' section.

Finished edges indicated by bold lines on side view drawings.

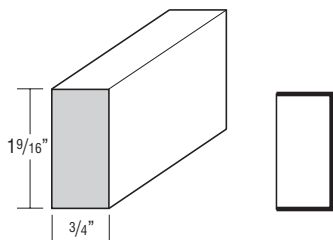


Accent Moulding, Light Baffle

Model	Cubic Feet	Price
LB2	0.5	\$79

One 8' section.

Finished edges indicated by bold lines on side view drawings.

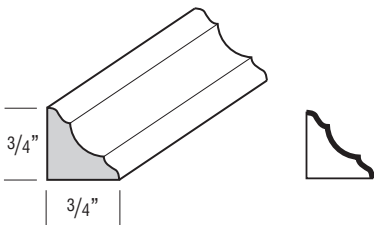


Moulding

Corner Moulding, Inside Corner

Model	Cubic Feet	Price
ICM8	0.5	\$63

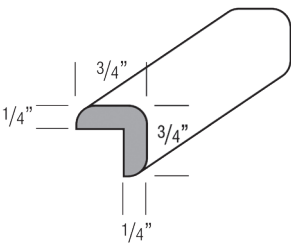
One 8' section.
Finished edges indicated by bold lines on side view drawings.
Not available in Admiral.



Corner Moulding, Outside Corner

Model	Cubic Feet	Price
OCM8	0.5	\$63

One 8' section.



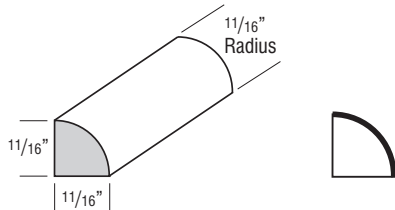
Moulding

Corner Moulding, Quarter Round

Model	Cubic Feet	Price
QRM	0.5	\$66

One 8' section.

Finished edges indicated by bold lines on side view drawings.



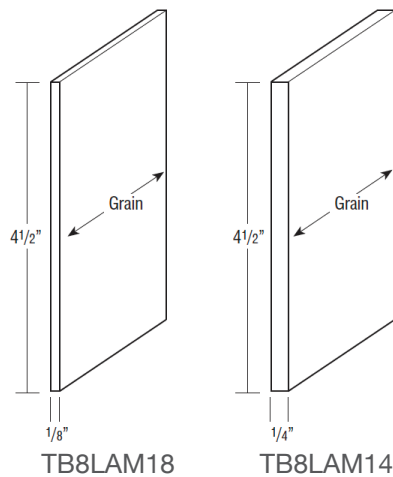
Toeboard

Model	Cubic Feet	Price
TB8LAM18	0.1	\$36
TB8LAM14	0.1	\$44

One 8' section.

TB8LAM18: $\frac{1}{8}$ " laminated furniture board. Not available in Admiral.

TB8LAM14: $\frac{1}{4}$ " laminated furniture board.



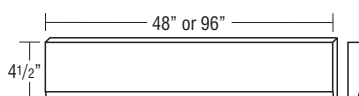
Straight Valance | Baseboard

Model	Cubic Feet	Price
VV48	0.4	\$77
VV96	0.4	\$152

Trimable.

Profiled bottom edge $\frac{3}{4}$ " thick.

VV48 not available in Admiral.

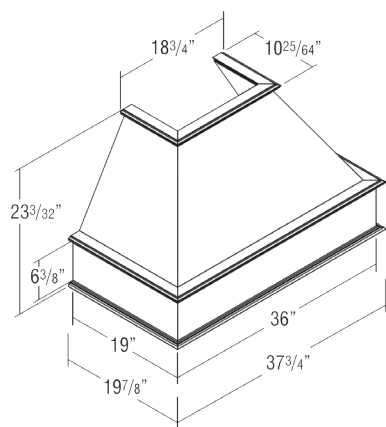


Accessories

Classic Square Wood Hood

Model	Cubic Feet	Price
WHS36	30.0	\$2,458

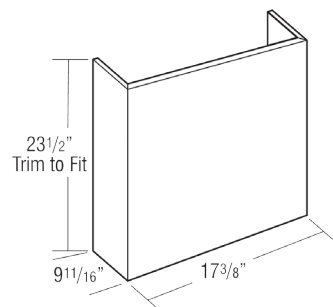
Freestanding unit (must be properly secured to wall and cannot be attached to adjacent cabinets).
Exhaust system not included. Compatible with BLOWER400.
Compatible with Classic Wood Hood Chimney (WHC_ _), which can be trimmed. See below.
Check your local building code for installation heights above the range.
Silver metallic liner included. Assembly required.
Installation instructions and hardware included.
Liner opening size: 10-1/4" deep by 19-1/2" wide.
Only available in Snow.



Classic Wood Hood Chimney

Model	Cubic Feet	Price
WHC36	4.1	\$463

3/4" thick plywood.
Trimable.
If trimmed, moulding is recommended to conceal any cut marks.
Only available in Snow.

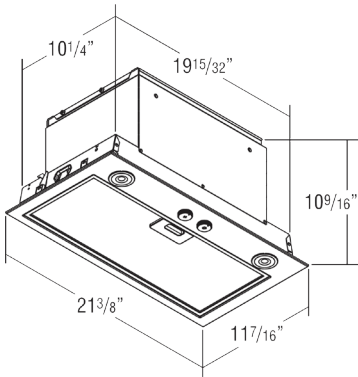


Accessories

Wood Hood Blower, 400 CFM

Model	Cubic Feet	Price
BLOWER400	2.9	\$939

- 400 CFM, Energy Star rated.
- Two 2.8 watt (250+ Lumens) LED lights included.
- Stainless Steel finish.
- Three speed rotary switch control.
- Includes removable dishwasher safe grease filter.
- Heat Sentry technology included.
- Sound rating is 7.0 sones on highest setting.
- Vertical ducting requires 7" diameter vent.
- 1 year warranty.

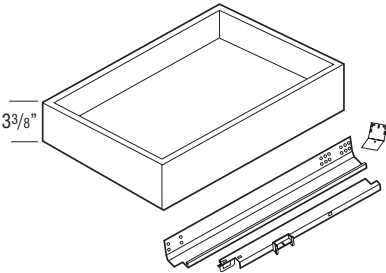


Accessories

Roll Tray Kits

Model	Cubic Feet	Price
RT15WD	0.5	\$127
RT18WD	0.8	\$133
RT21WD	0.9	\$137
RT24WD	1.0	\$142
RT27WD	1.4	\$148
RT30WD	1.4	\$152
RT33WD	1.6	\$159
RT36WD	1.6	\$165
RT42WD	1.8	\$272

5/8" solid-wood dovetail roll tray with soft-closing, undermount, full extension guides.
RT15WD-RT36WD kits contain 1 roll tray, roll tray brackets, hardware, and screws.
RT42WD kits contain 2 roll trays, roll tray brackets, hardware, and screws.
Exterior dimensions of roll trays are 21" deep x 3 3/8" tall (fits standard 24" deep cabinet).



Width	Application
15"	B15, B15FH, B1532.5
18"	B18, B18FH, B1832.5, U18
21"	B21, B2132.5
24"	B24, B24FH, B2432.5, U24
27"	B27, B2732.5
30"	B30, B30FHB, B3032.5, U30
33"	B33, B3332.5
36"	B36, B36FH, B3632.5
42"	B42, B4232.5

Accessories

Tilt-Out Trays

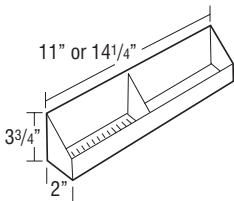
Model	Cubic Feet	Price
TOT15	0.1	\$82
TOT18	0.2	\$82

TOT15: 11" w X 2" d X 3 3/4"

TOT18: 14 1/4" w X 2" d X 3 3/4"

Kit includes two white plastic trays and one pair of tilt-out hinges that attaches to the inside of the false panel.

One tilt-out tray per false panel on cabinets less than 30" wide and greater than 36" wide, two tilt-out trays attached to one false panel on 30"-36" wide cabinets.



Cab Width	TOT Size	Cabinets
24"	TOT18	SB24, VSB2432.521, VSB243418, VSB243421
27"	TOT18	SB27, SB2732.5
30"	TOT15	SB30, VSB3032.521, VSB303421
33"	TOT15	SB33
36"	TOT18	SB36, VSB3632.521, VSB363421
42"	TOT18	SB42

Accessories

Stain & Paint

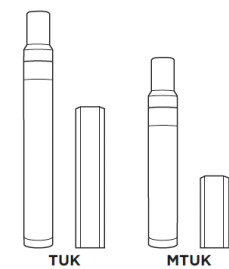
Model	Cubic Feet	Price
QUARTCOLOR	0.1	\$124
SSC	0.1	\$46
SSCCLEAR	0.1	\$46

Wiping stain can be sprayed at low pressure.
SSC is a 384 mL aerosol can available in Paint colors.
SSCCLEAR is a 384 mL aerosol can in clear.

Touch-Up Kit

Model	Cubic Feet	Price
TUK	0.1	\$65
MTUK	0.1	\$39

TUK includes touch-up marker and a fill stick.
MTUK includes small touch-up marker and a small fill stick.





We Deliver More®