



TRI-CREEK
YOUR HOME IMPROVEMENT CENTER

In-Stock Cabinetry

June 2024

Table of Contents



- 1 Door Style**
- 2 Specifications**
- 3 Walls**
- 4 Bases**
- 5 Vanities**
- 6 Accessories**
- 7 Inspiration Meets Creation**
- 8 Measure Your Space**
- 9 Cabinet Care**

Coming Fall 2024



Elevate your space with our exclusive handcrafted custom cabinetry. Offering endless styles, finishes, and storage solutions. Let our trend setting designers bring your vision to life with quality that lasts.

- | | | |
|---------------------|----------------------|----------------------|
| -Framed | -Closet & Pantries | -Offices |
| -European/Frameless | -Kitchen & Baths | -Fireplace Surrounds |
| -Inset | -Bars & Theaters | -Built-ins |
| -Custom Sizing | -Laundry & Mud Rooms | -Commercial |

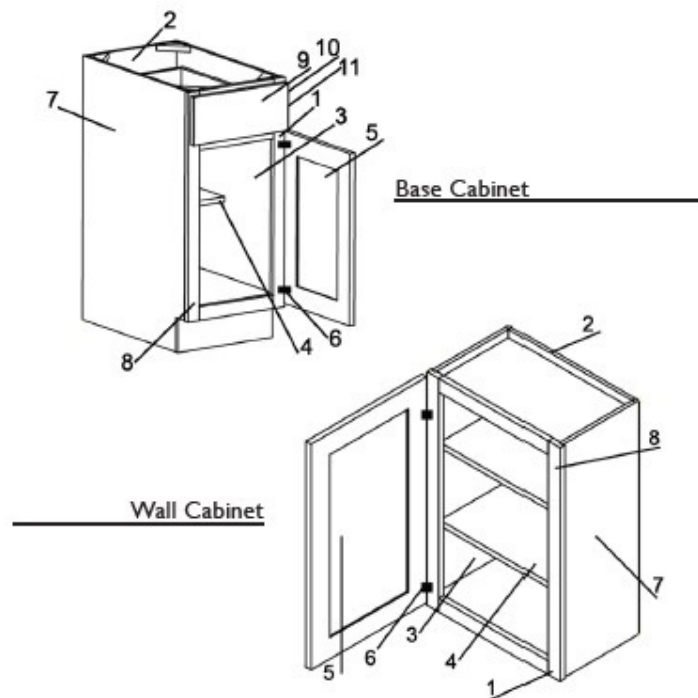


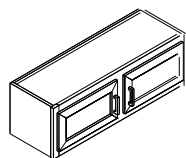
*Special Orders Available



Specifications

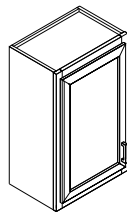
1. 3/4" hardwood face frames with glued and pocket screwed joints.
2. 3/8" particle board back with maple print interior.
3. 3/8" particle board sides, tops, and bottoms, with maple print interior.
4. 5/8" particle board shelving with a maple print on both sides and one edge. All shelves are adjustable with base cabinets having 1/2 depth shelves, supported by shelf clips.
5. Pioneer door is a 3/16" engineered, veneered flat panel with 2 1/4" hardwood stiles and rails.
6. One piece adjustable soft close hinge.
7. Ends will be a closely matching print to the finish.
8. Standard finish consists of Arctic paint. Finish thickness approximately 7 mil. wet.
9. 3/4" hardwood drawer fronts, painted maple will be 3/4" HDF fronts.
10. Self adjusting epoxy coated 3/4 extension side mount drawer guides. Blum 7/8 extension undermount soft close track.
11. Drawer box - 1/2" rabbeted baltic birch drawer with 1/4" floor, and 3/4" extension side mount. Dovetail drawer box with Blum 7/8 extension undermount soft close track.





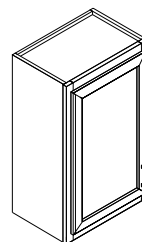
Wall
12" H

*30" W W3012-2BPA	\$148.84
*36" W W3612-2BPA	\$156.84
*(24" D) 36" W W3612U24-2BPA	\$179.84



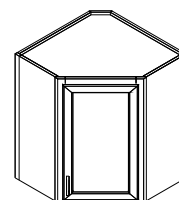
Wall
30" H

*9" W W930LPA	\$113.84
*12" W W1230LPA	\$120.84
*15" W W1530LPA	\$124.84
*18" W W1830LPA	\$139.84
*21" W W2130LPA	\$142.84
*24" W W2430LPA	\$150.84



Wall
36" H

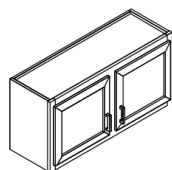
*9" W W936LPA	\$160.84
*12" W W1236LPA	\$168.84
*15" W W1536LPA	\$186.84
*18" W W1836LPA	\$188.84
*21" W W2136LPA	\$192.84
*24" W W2436LPA	\$200.84



Corner Wall

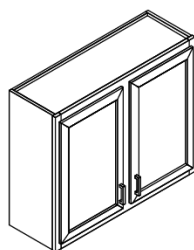
30" H

*24" W WD2430LPA WD2430RPA	\$205.84
---	-----------------



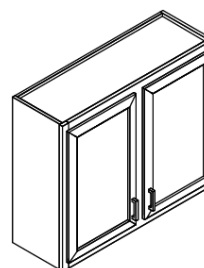
Wall
18" H

*30" W W3018-2BPA	\$166.84
*36" W W3618-2BPA	\$173.84
*(24" D) 36" W W3618U24-2BPA	\$196.84



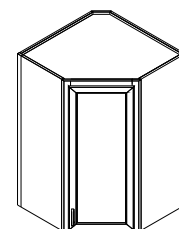
Wall
30" H

*27" W W2730-2BPA	\$202.84
*30" W W3030-2BPA	\$209.84
*33" W W3330-2BPA	\$217.84
*36" W W3630-2BPA	\$224.84
*39" W W3930-2BPA	\$234.84
*42" W W4230PA	\$241.84
*48" W W4830PA	\$261.84



Wall
36" H

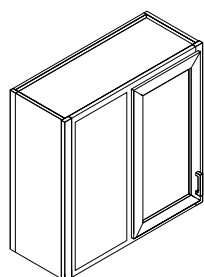
*27" W W2736-2BPA	\$257.84
*30" W W3036-2BPA	\$264.84
*33" W W3336-2BPA	\$280.84
*36" W W3636-2BPA	\$281.84
*39" W W3936-2BPA	\$290.84
*42" W W4236PA	\$298.84
*48" W W4836PA	\$321.84



Corner Wall

36" H

*24" W WD2436LPA WD2436RPA	\$270.84
---	-----------------



Blind Corner

30" H

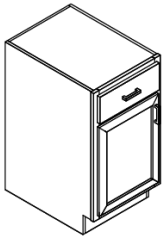
*30" W WC3030LPA WC3030RPA	\$165.84
---	-----------------

36" H

*30" W WC3036LPA WC3036RPA	\$218.84
---	-----------------

**Line drawings are just representations and may not reflect true cabinet styles*

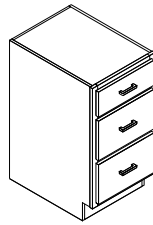




Base

34-1/2" H

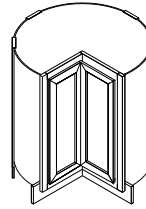
*12" W B12LPA	\$243.84
*15" W B15LPA	\$254.84
*18" W B18LPA	\$263.84
*21" W B21LPA	\$272.84



Drawer Base

34-1/2" H

*15" W BD15-3PA	\$405.84
*18" W BD18-3PA	\$415.84
*24" W BD24-3PA	\$434.84
*33" W BD33-3PA	\$658.84
*36" W BD36-3PA	\$712.84

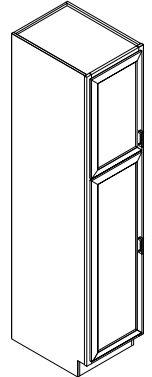


Lazy Susan

34-1/2" H

*36" W BER36LSRPA	\$536.84
----------------------	----------

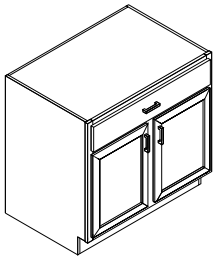
Midland
CABINETRY



Pantry Cabinet

84" H

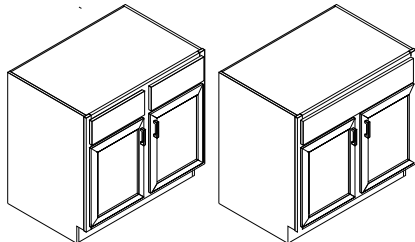
*18" W PE1884U24LPA PE1884U24RPA	\$387.84
90" H	
*18" W PE1890U24LPA PE1890U24RPA	\$437.84



Base

34-1/2" H

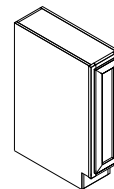
*24" W B24LPA	\$281.84
*27" W B27-2BPA	\$346.84
*30" W B30-2BPA	\$346.84
*33" W B33-2BPA	\$365.84
*36" W B36-2BPA	\$374.84



Sink Base

34-1/2" H

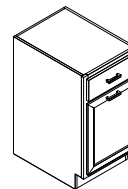
*24" W BS24LPA	\$215.84
*30" W BS30-2BPA	\$253.84
*33" W BS33-2BPA	\$260.84
*36" W BS36-2BPA	\$265.84



Tray Base

34-1/2" H

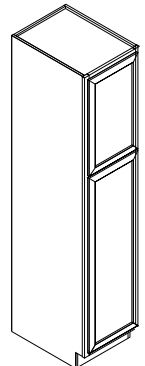
*9" W B9FHDLP	\$185.84
------------------	----------



Wastebasket Kit

34-1/2" H

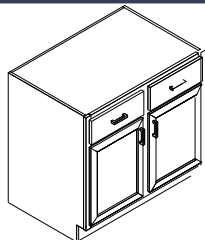
*18" W BM18TR-RDKPA	\$527.84
Bottom Mount Dbl Waste Roll Out DWB35QT-RO	\$95.84
K-Waste Bin 35QT White KWASTE35QT	\$23.84
Can-Door Kit w/ Garbage Mount Kit DMK	\$27.84



Linen Cabinet

84" H

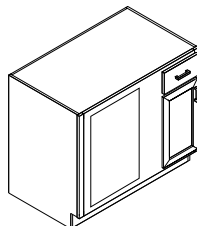
*18" W PLE1884U21LPA PLE1884U21RPA	\$528.84
--	----------



Base

34-1/2" H

*39" W B39-2BPA	\$385.84
*42" W B42PA	\$523.84
*48" W B48PA	\$635.84



Corner Base

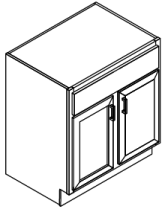
34-1/2" H

*42" W B42BCLPA B42BCRPA	\$311.84
*48" W B48BCLPA B48BCRPA	\$322.84



*Line drawings are just representations and may not reflect true cabinet styles





Vanity Sink Base

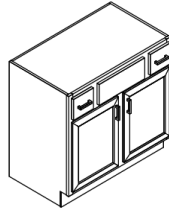
34-1/2" H

*24" W \$232.84

VSB24AHLPA

*30" W \$277.84

VSB30AH-2BPA



Top Drawer Sink Base

34-1/2" H

*36" W \$414.84

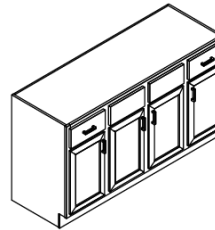
VB36SPAH-2BPA

*42" W \$429.84

VB42SPAH-PA

*48" W \$442.84

VB48SPAH-MPA

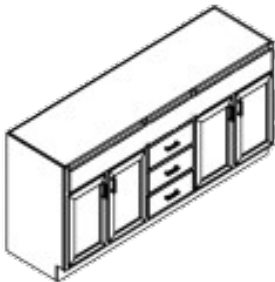


Single Sink Vanity

34-1/2" H

*60" W \$487.84

VB60SPAH-MPA

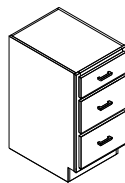


Double Sink Vanity Drawer Base

34-1/2" H

*60" W \$676.84

VB60CDAH-3PA



Vanity Drawer Base

34-1/2" H

*12" W \$386.84

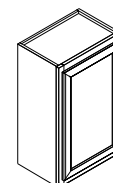
VDB12AH-3PA

*15" W \$400.84

VDB15AH-3PA

*24" W \$484.84

VDB24AH-3PA



Toilet Topper

30" H

9" Depth

*24" W \$113.84

W2430TTU9LPA

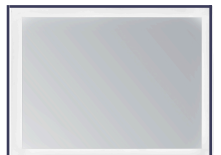


30"x42"

Seawin
Backlit Mirror

SW1401A

\$467.84



42"x42"

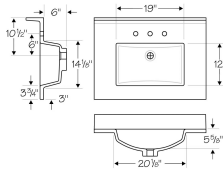
Seawin
Backlit Mirror

SW1401B

\$541.84



White Cultured Stone Lavatories



Large Venetian Bowl

The bowl is centered, and faucet hole spacing is 4" is typical for a one-piece faucet set.
For use in 22 1/2" deep lavatories



25" x 22"

2522WVT

5/8" Edge

\$210.84



31" x 22"

3122WVT

5/8" Edge

\$241.84



37" x 22"

3722WVT

5/8" Edge

\$272.84



43" x 22"

4322WVT

5/8" Edge

\$303.84



49" x 22"

4922WVT

5/8" Edge

\$333.84



61" x 22"

6122WVT

5/8" Edge

\$396.84



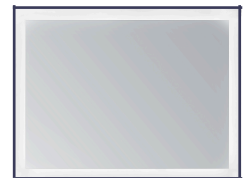
61" x 22"

Double Bowl

6122WVT2

5/8" Edge

\$475.84



54"x42"

Seawin
Backlit Mirror

SW1401C

\$624.84

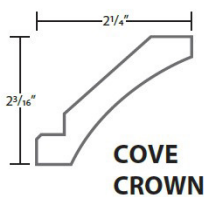


*Line drawings are just representations and may not reflect true cabinet styles

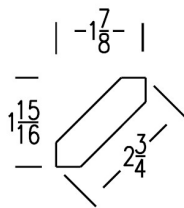


3" x 30" filler (F-3X30A)	\$26.84
3" x 42" filler (F-3X42A)	\$31.84
3" x 96" filler (F-3X96A)	\$103.84
6" x 96" filler (F-6X96A)	\$133.84
Toekick (FINTK4.5A)	\$11.84
Outside Corner (OUTCORN-22A)	\$49.84
Shaker Outside Corner (OUTCORNSHAKERA)	\$47.84
Shaker Crown (SHKRCROWNA)	\$61.84
Cove Crown Moulding (COVECROWNA)	\$111.84
Shoe Moulding (SHOE A)	\$27.84
Scribe Moulding (SCRIBEA)	\$27.84
Batten Moulding (BATTENA)	\$27.84
Dishwasher Panel (BEP-3LPA)(BEP-3RPA)	\$49.84
Base End Panel (FE-B34.5A)	\$87.84
30" Wall Panel (FE-W30A)	\$37.84
36" Wall Panel (FE-W36A)	\$46.84
27" End Panel (REPU27961.5LA)(REPU27961.5RA)	\$269.84
42"x48" Finish Back Panel (1/4FBBS-42PA)	\$221.84
34-1/2"x48" Finish Back Panel (1/4FBBS-FW34.5)	\$221.84
23-1/4" Tall End Panel (FE-PE96A)	\$246.84
20-1/4" Linen End Panel (FE-PLE96A)	\$162.84
26-1/4" Tall End Panel (FE-REP96A)	\$209.84
34-1/4"x48" Back Panel (1/4FBBS-34.5PA)	\$82.84
Touch up kit (TUK-PAINTA)	\$50.84

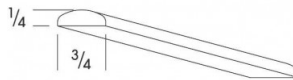
Cove Crown



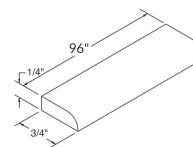
Shaker Crown



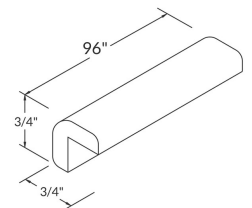
Batten



Scribe



Outside Corner



Midland
CABINETRY



**Line drawings are just representations and may not reflect true cabinet styles*



tricreek.com

Wondering what to do first?

Use the guide below

Set Your Project Parameters

Think about your design

Take rough measurements. Draw them out on the measure your space page.

Define Your Vision

Identify your style.

Collect inspiration. Save favorite images from designs you have seen to share with your designer.

Think about your appliances. Your new kitchen layout will be built around your major appliances. Map out the number, size and type you're considering.

Pick out materials. Have a general idea of the materials you prefer for the big-impact elements of your new kitchen and bath. Think cabinetry, countertops, decorative knobs/pulls, sink, appliances, faucets, light fixtures, paint, trim and doors.

Plan For What's Next

Get ready for your showroom visit. Bring in all your design and vision ideas.

Book your contractors early. Start your search now – Good contractors are busy and they would want to get you on their schedule as soon as possible.

Prepare for construction. It's never too early to strategize how you'll get through the disruptions.

Talk to your designer about the delivery process.



Project Check List

- CABINETRY
- COUNTERTOPS
- DECORATIVE KNOBS/PULLS
- SINK
- APPLIANCES
- FAUCET
- LIGHT FIXTURES
- FLOORING
- TRIM/DOORS
- PAINT

Note _____

Got a specific question about your project?

Visit tricreek.com/kitchen-bath or call 219.696.8936 to get personal advice from a Tri-Creek Kitchen & Bath Designer.



1. SKETCH AN OUTLINE OF YOUR KITCHEN

Label each wall with a number or letter for easier reference in future design and new kitchen layout planning discussions. Precise scale isn't important. Take pictures of each wall and closer shots detailing any obstructions. This step helps your designer visualize the things you've noted on your drawing.

2. LOCATE OPENINGS AND OBSTRUCTIONS

Mark the general location of any windows, door openings and obstructions like radiators or structural posts.

3. LOCATE KITCHEN APPLIANCES

Mark the general location of your sink and range.

4. GRAB A TAPE MEASURE

Measure the full width of each wall from corner to corner. Write down the measurements (in inches) on your drawing.

5. MEASURE FOR OPENINGS AND OBSTRUCTIONS

After you've measured the overall width, go back and measure the locations of all the openings and obstructions you've already marked. Measure windows and doors from the outside edge of the trim on one side to the outside edge of trim on the other. Note the height of each opening too.

Also measure your kitchen from the nearest wall/corner to the center of each window and door.

6. LOCATE ANY UTILITIES

Identify all water supply and drain lines, gas lines, electric outlets and HVAC vents. If you can't see the gas line behind the range, for example, then measure to the center of the range. The gas line will be located nearby.

7. MEASURE THE HEIGHT OF YOUR ROOM

If you have soffits, the part of the ceiling that drops down to meet the top of your upper cabinets, then get both floor-to-ceiling and floor-to-soffit measurements.



Cabinet Care

Interiors

The interiors of the Midland Cabinets are surfaced with a Maple grained print that resists most stains, scuffs, and mars.

Cleaning

Midland hardwood exteriors have a high quality finish on the wood that brings out its full beauty. We recommend cleaning the interior and exterior of your cabinets once a month with a clean damp sponge or cloth. If a spill occurs, it is important to clean up the spill and dry the surface right away. A spill left unattended will soak through the Maple print and cause damage. We do not recommend using paper towels because of their abrasiveness. To remove food residue or grease, use clean suds with a mild soap and water mixture. Do not use cleaners that have any abrasive additive, bleach or ammonia. These cleaners will cause damage to your cabinet finish. Dishcloths used for other cleaning should never be used as they could contain remnants of harsh chemicals or grease. Following cleaning, wipe all excess moisture off the cabinet fronts and door backs.

Caution

The most common form of damage done to cabinetry during normal maintenance is over scrubbing of the finishes, especially the edge profiles. Excess moisture can damage any cabinet finish. Areas near the sink, dishwasher, range, oven and baseboards are the most susceptible. Keep these areas dry. Midland cabinets have a high quality varnish finish and waxing is not necessary. Furniture polish may be used if waxing is preferred. Make sure to wipe off any excess polish to avoid build-up.

Color Variance

Colors of all products change as they age. Various wood species will react in different ways depending on their exposure to the sun as well as the environment they are located in.

Furniture Finish

All finishes are glossier when freshly finished. The gloss level will tone down after approximately 6 months, depending on the environmental exposure.

Cabinet Door Backs

Door backs will not be finished to the same level of artistic detail as the front. They will have the same blending color and durability as the front of the door.





TRI-CREEK
YOUR HOME IMPROVEMENT CENTER

**1895 East
Commercial Ave.
Lowell, IN 46356**

219.696.8936

tricreek.com

