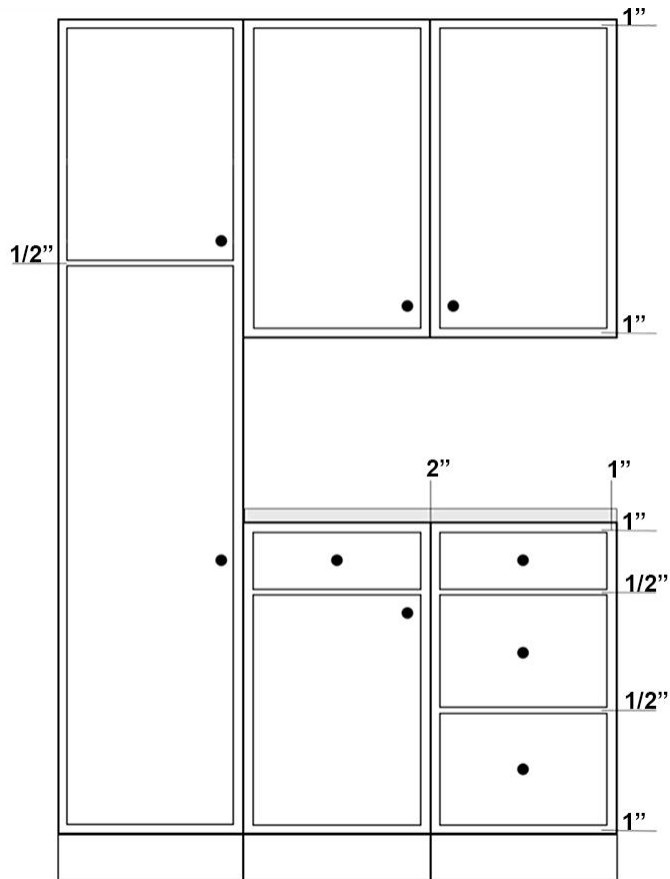


PIONEER DOOR STYLE

Artic White

1. 3/4" x 1 1/2" hardwood face frames with glued and pocket screwed joints.
2. 3/8" particle board back with maple print interior.
3. 3/8" particle board sides, tops and bottoms with maple print interior.
4. 5/8" particle board shelving with maple print on both sides and one edge. All shelves are adjustable with base cabinets having 1/2 depth shelves, supported by shelf clips.
5. The Pioneer door style has 3/16" engineered, veneered flat panel with 2 1/4" hardwood stiles and rails.
6. One piece adjustable door hinge with an option to upgrade to softclose.
7. End skins will be a closely matching print to the finish selection.
8. The standard finish consists of a non-wiping stain, a coat of self sealing conversion varnish, and a top coat of conversion varnish. This finish process is considered to be one of the best in the cabinetry business.
9. 3/4" hardwood drawer fronts, painted maple will be 3/4" HDF fronts.
10. Self adjusting epoxy coated 3/4 extension side mount drawer guides.
11. Base drawer boxes will have a 1/2" rabbeted 9 ply drawer with a 1/4" floor and 3/4" extension side mount.

Standard Overlay



Vertical reveals between doors or drawers of connecting cabinets will be 2". Horizontal reveals between stacked drawers, between drawers and doors and between stacked doors will be 1 1/2". Reveals at the top and bottom of walls, talls, bases, office, and vanities will be 1".